

MBP 25 T2 0,37kW (502202515)

GENERAL DATA



MEDIUM PRESSURE WITH BACKWARD IMPELLER AND PLASTIC CONSTRUCTION

MANUFACTURING FEATURES:

- PE plastic housing.
- Backward impeller with self-cleaning system in PP plastic.
- Motor support made of rolled steel sheet with polyester powder finishing coat.
- Stainless steel nuts and bolts.
- Standard asynchronous squirrel-cage motor, IP-55, class F insulation. Standard voltages 230/400V 50Hz
- Standard orientation: LG270.

APPLICATIONS:

Designed for inline installation, they are suitable for:

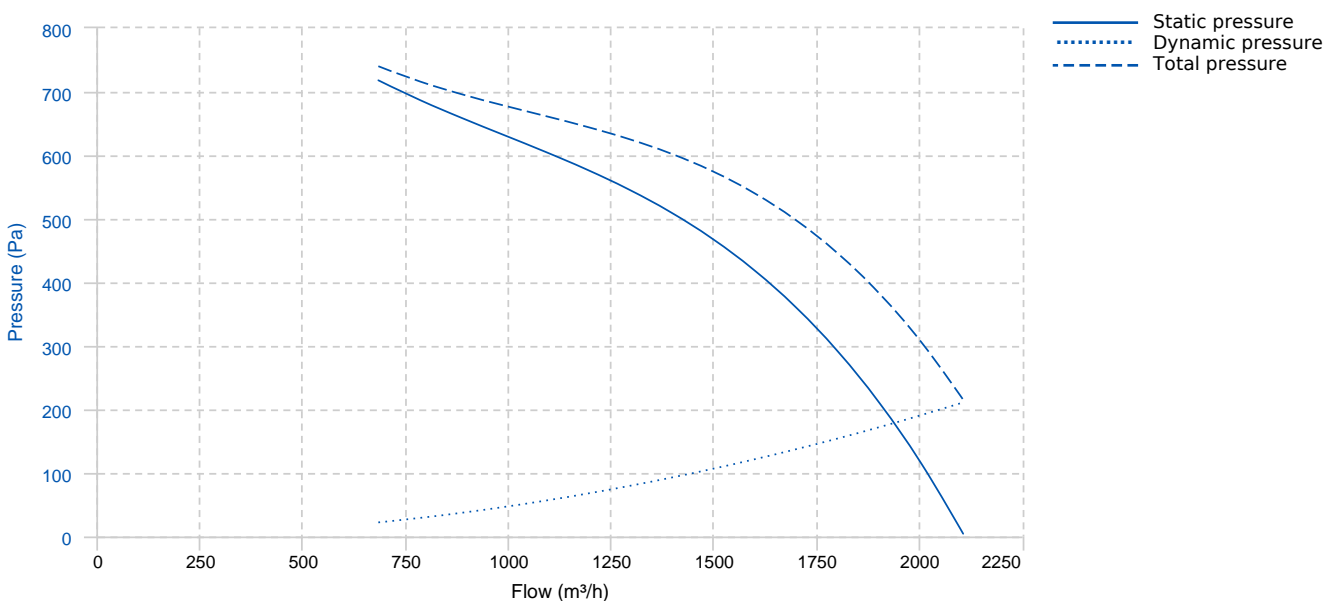
- Corrosive air transport.
- Chemical and petrochemical industry.
- Laboratories and gas cabinets.

• Maximum temperature of transported air: If it is clean air 70°C, other depends on the gas (see table in documentation)

UNDER REQUEST:

- Single phase motors (up to 1,5Kw).
- 60Hz fans and special voltages fans.
- 2 speed motors.
- Stainless steel motor support.
- Casing made of PP.
- Orientation: RD0, RD45, RD90, RD135, RD180, RD225, RD270, RD315, LG0, LG45, LG90, LG135, LG180. LG225, LG315.

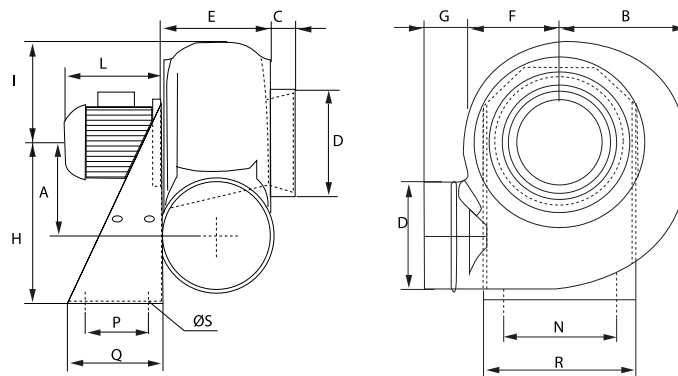
PERFORMANCE CURVE



TECHNICAL DATA

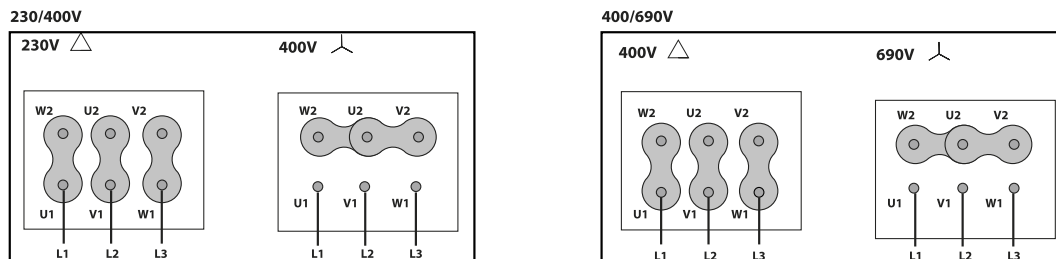
Fan							
RPM	2730	Approx. weight	13 kg	Max. Flow	2110 m ³ /h		
Motor							
Power	0.37 kW	RPM	2730	I max. (230V)	1,7 A	I max. (400V)	0,97 A
Size	71	Efficiency (%)	70 %	FP	0.79		

DIMENSIONS



Dimensions (mm)									
A	173	B	228	C	35	DØ	200	E	185
F	170	G	55	H	310	I	190	L	220
N	255	P	100	Q	140	R	290	S	11

WIRING DIAGRAM



ACCESSORIES



SAFETY SWITCH
INT 25 3P A
REF: INT253PA



ANTI-VIBRATING FLANGE 400^º/2H
BA-400 20
REF: 960002066



ANTI-VIBRATION JOINT
JE 45
REF: 300719201



PVC FLEXIBLE JOINT
FJ Ø200
REF: FJ-200



DIFUSOR GRID
DG Ø200
REF: DG200



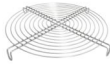
CIRCULAR GRAVITY DAMPER
CSC Ø200
REF: CSC200



ADJUSTABLE DAMPER
AD Ø200
REF: AD-200



DRAIN PLUG
PD 1
REF: PD1



STAINLESS STEEL PROTECTION GRID
RPI Ø200
REF: RPI200



WALL SUPPORT
WS 1
REF: WS1



ANTI-VIBRATION BLOCK
AV 1
REF: AV-1



CASING PROTECTION
PC 25
REF: PC25



MOTOR PROTECTION
PCM 1
REF: PCM1



FREQUENCY SPEED CONTROLLER
SFC 230 I 2,5A *
REF: SFC230I003



FREQUENCY SPEED CONTROLLER
SFC 400 III 1,2A *
REF: SFC400III1

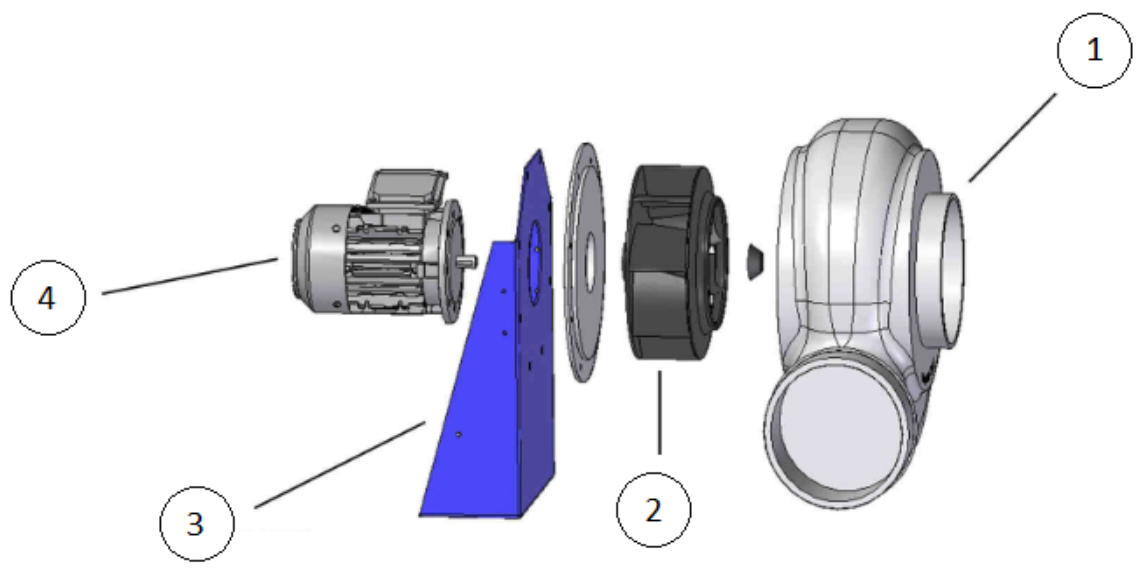


ANTI-VIBRATION RUBBER BLOCK
AVR (GENERIC)



ANTI-VIBRATION SPRING BLOCK
AVS (GENERIC)

SPARE PARTS



	Code	Model	Qty
2	T02202515	TURBINE MBP 25 T2 0,37kW LG	x1