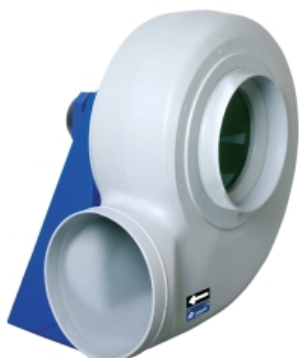


MBP 35 T2 2,2kW (502203527)

GENERAL DATA



MEDIUM PRESSURE WITH BACKWARD IMPELLER AND PLASTIC CONSTRUCTION

MANUFACTURING FEATURES:

- PE plastic housing.
- Backward impeller with self-cleaning system in PP plastic.
- Motor support made of rolled steel sheet with polyester powder finishing coat.
- Stainless steel nuts and bolts.
- Standard asynchronous squirrel-cage motor, IP-55, class F insulation. Standard voltages 230/400V 50Hz
- Standard orientation: LG270.

APPLICATIONS:

Designed for inline installation, they are suitable for:

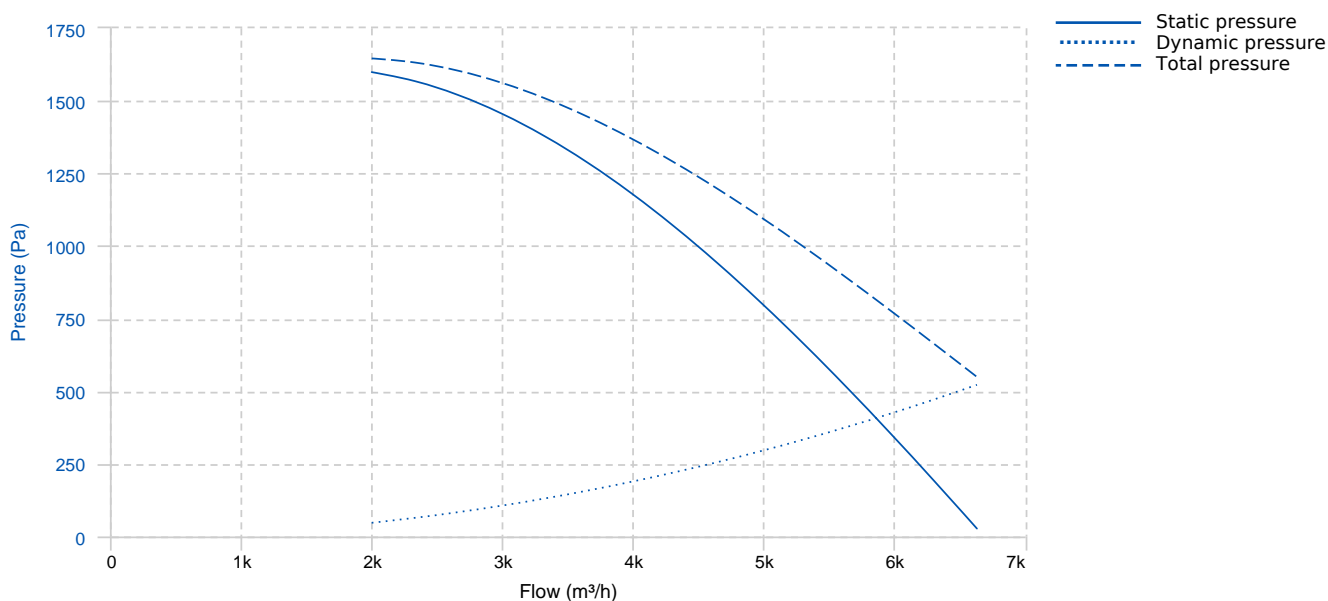
- Corrosive air transport.
- Chemical and petrochemical industry.
- Laboratories and gas cabinets.

• Maximum temperature of transported air: If it is clean air 70°C, other depends on the gas (see table in documentation)

UNDER REQUEST:

- Single phase motors (up to 1,5Kw).
- 60Hz fans and special voltages fans.
- 2 speed motors.
- Stainless steel motor support.
- Casing made of PP.
- Orientation: RD0, RD45, RD90, RD135, RD180, RD225, RD270, RD315, LG0, LG45, LG90, LG135, LG180. LG225, LG315.

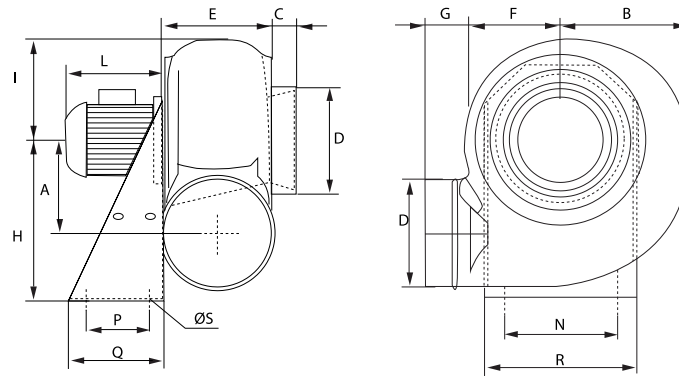
PERFORMANCE CURVE



TECHNICAL DATA

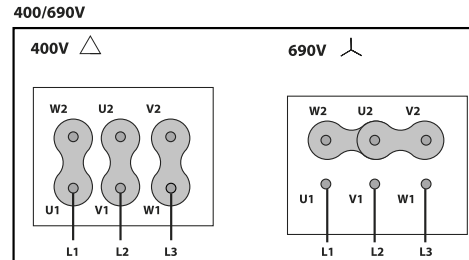
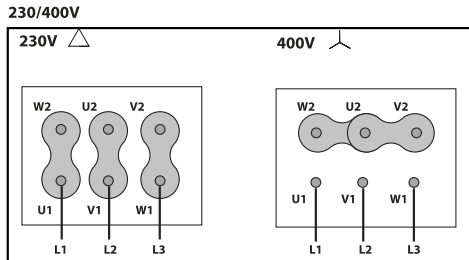
Fan							
RPM	2860	Approx. weight	32 kg	Max. Flow	6630 m ³ /h		
Motor							
Power	2.0000000000000002 kW	RPM	2860	I max. (230V)	7,9 A	I max. (400V)	4,54 A
Size	90	Efficiency (%)	85.9 %	FP	0.84		

DIMENSIONS



Dimensions (mm)									
A	260	B	312	C	40	DØ	280	E	237
F	230	G	50	H	445	I	270	L	290
N	355	P	150	Q	230	R	390	S	11

WIRING DIAGRAM



ACCESSORIES



SAFETY SWITCH
INT 25 3P A
REF: INT253PA



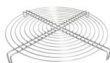
ANTI-VIBRATION JOINT
JE 45
REF: 300719201



DIFUSOR GRID
DG Ø280
REF: DG280



ADJUSTABLE DAMPER
AD Ø280
REF: AD-280



STAINLESS STEEL PROTECTION GRID
RPI Ø280
REF: RPI280



ANTI-VIBRATING FLANGE 400^ø/2H
BA-400 30/31
REF: 960002052



PVC FLEXIBLE JOINT
FJ Ø280
REF: FJ-280



CIRCULAR GRAVITY DAMPER
CSC Ø280
REF: CSC280



DRAIN PLUG
PD 1
REF: PD1



WALL SUPPORT
WS 1
REF: WS1



**ANTI-VIBRATION BLOCK
AV 2**
REF: AV-2



**CASING PROTECTION
PC 35**
REF: PC35



**MOTOR PROTECTION
PCM 2**
REF: PCM2



**FREQUENCY SPEED CONTROLLER
SFC 230 I 10A ***
REF: SFC230I0010



**FREQUENCY SPEED CONTROLLER
SFC 400 III 5A ***
REF: SFC400III5

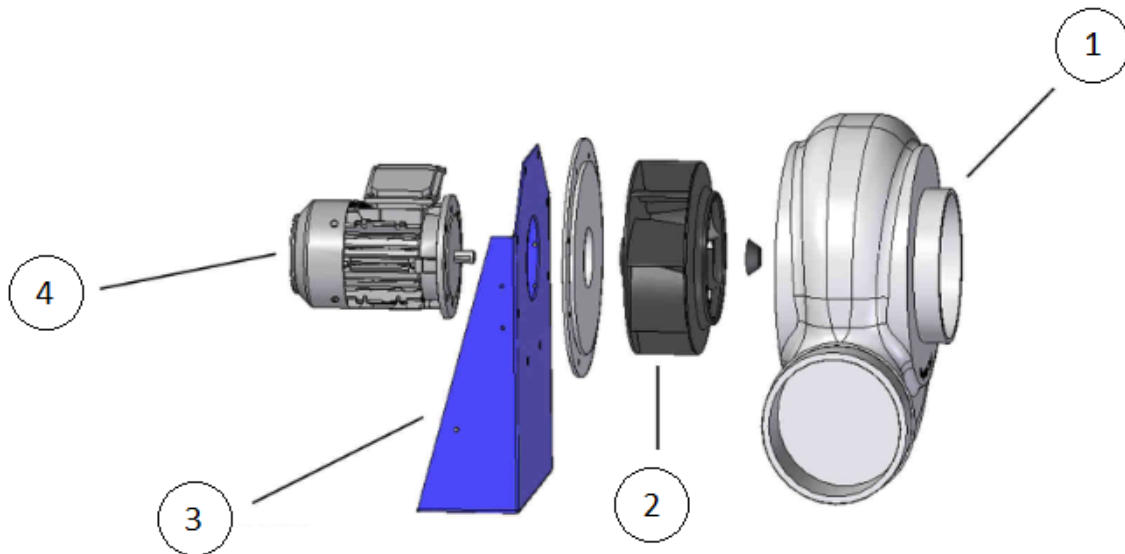


**ANTI-VIBRATION RUBBER BLOCK
AVR (GENERIC)**



**ANTI-VIBRATION SPRING BLOCK
AVS (GENERIC)**

SPARE PARTS



	Code	Model	Qty
2	T02203527	TURBINE MBP 35 T2 2,2kW LG	x1
4	721001052	MOTOR 2,2kW T2 B5 230/400V	x1