

# MBP 40 T4 0,55kW (502204043)

## GENERAL DATA



### MEDIUM PRESSURE WITH BACKWARD IMPELLER AND PLASTIC CONSTRUCTION

#### MANUFACTURING FEATURES:

- PE plastic housing.
- Backward impeller with self-cleaning system in PP plastic.
- Motor support made of rolled steel sheet with polyester powder finishing coat.
- Stainless steel nuts and bolts.
- Standard asynchronous squirrel-cage motor, IP-55, class F insulation. Standard voltages 230/400V 50Hz
- Standard orientation: LG270.

#### APPLICATIONS:

Designed for inline installation, they are suitable for:

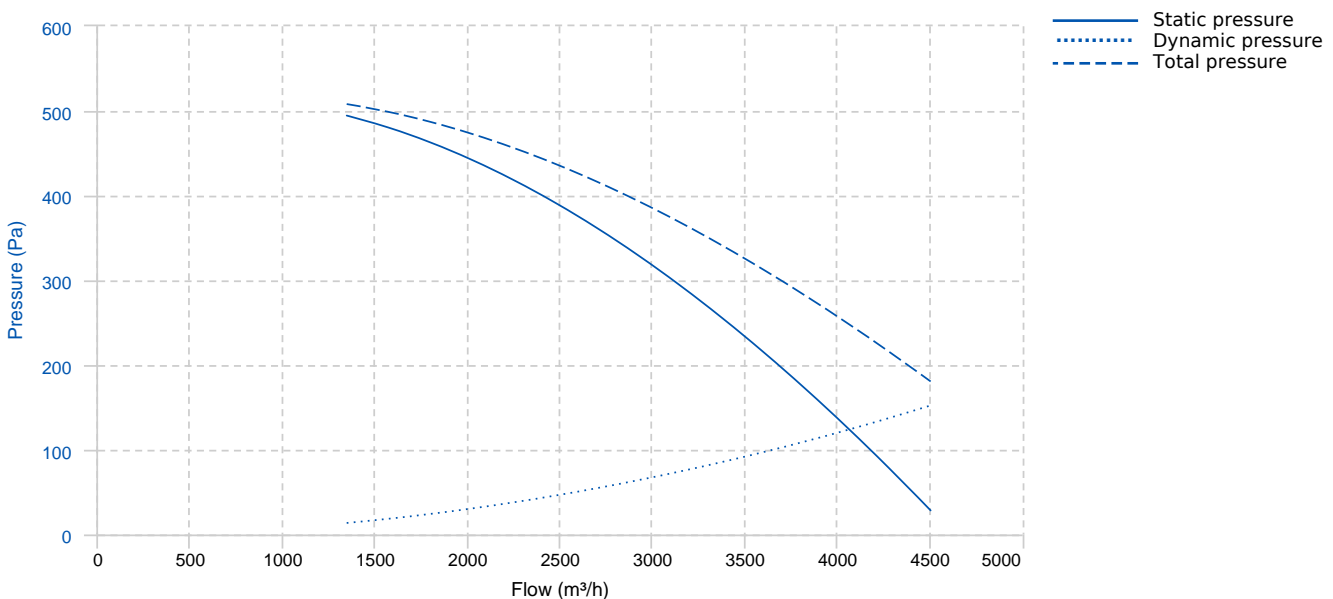
- Corrosive air transport.
- Chemical and petrochemical industry.
- Laboratories and gas cabinets.

• Maximum temperature of transported air: If it is clean air 70°C, other depends on the gas (see table in documentation)

#### UNDER REQUEST:

- Single phase motors (up to 1,5Kw).
- 60Hz fans and special voltages fans.
- 2 speed motors.
- Stainless steel motor support.
- Casing made of PP.
- Orientation: RD0, RD45, RD90, RD135, RD180, RD225, RD270, RD315, LG0, LG45, LG90, LG135, LG180. LG225, LG315.

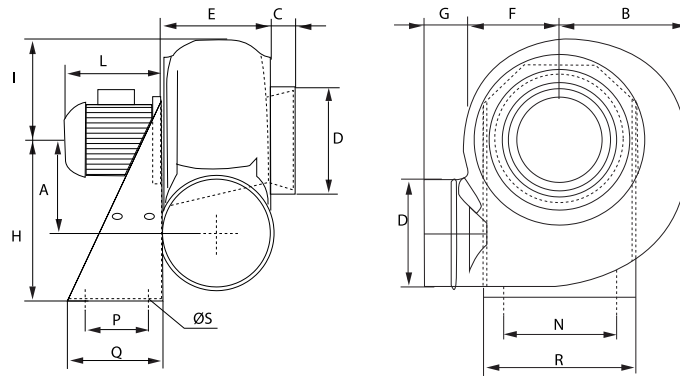
## PERFORMANCE CURVE



## TECHNICAL DATA

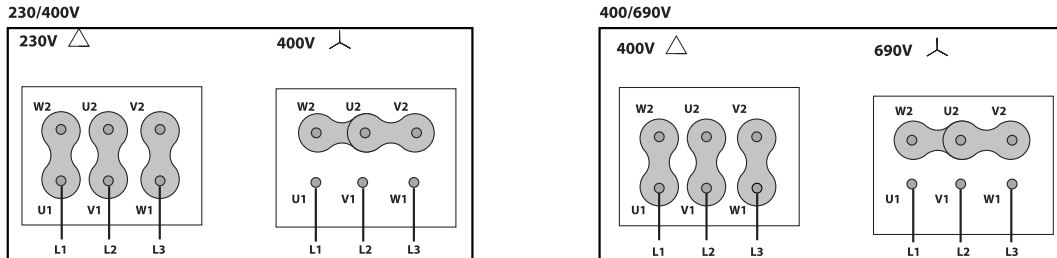
Fan							
RPM	1370	Approx. weight	33 kg	Max. Flow	4510 m <sup>3</sup> /h		
Motor							
Power	0.5500000000000004 kW	RPM	1370	I max. (230V)	2,7 A	I max. (400V)	1,58 A
Size	80	Efficiency (%)	67 %	FP	0.75		

## DIMENSIONS



Dimensions (mm)									
A	290	B	356	C	40	DØ	315	E	252
F	264	G	55	H	495	I	295	L	240
N	325	P	170	Q	250	R	365	S	11

## WIRING DIAGRAM



## ACCESSORIES



**SAFETY SWITCH**  
INT 25 3P A  
REF: INT253PA



**ANTI-VIBRATING FLANGE 400<sup>ø</sup>/2H**  
BA-400 30/31  
REF: 960002052



**ANTI-VIBRATION JOINT**  
JE 45  
REF: 300719201



**PVC FLEXIBLE JOINT**  
FJ Ø315  
REF: FJ-315



**DIFUSOR GRID**  
DG Ø315  
REF: DG315



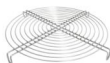
**CIRCULAR GRAVITY DAMPER**  
CSC Ø315  
REF: CSC315



**ADJUSTABLE DAMPER**  
AD Ø315  
REF: AD-315



**DRAIN PLUG**  
PD 1  
REF: PD1



**STAINLESS STEEL PROTECTION GRID**  
RPI Ø315  
REF: RPI315



**WALL SUPPORT**  
WS 1  
REF: WS1



**ANTI-VIBRATION BLOCK  
AV 2**  
REF: AV-2



**CASING PROTECTION  
PC 40**  
REF: PC40



**MOTOR PROTECTION  
PCM 2**  
REF: PCM2



**FREQUENCY SPEED CONTROLLER  
SFC 230 I 4,2A \***  
REF: SFC230I004



**FREQUENCY SPEED CONTROLLER  
SFC 400 III 2,2A \***  
REF: SFC400III2

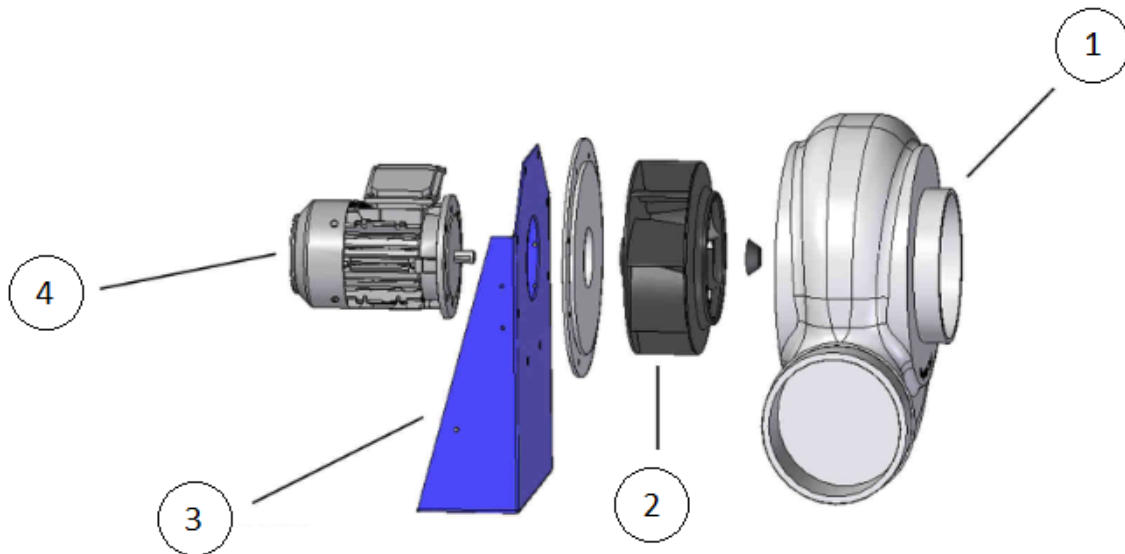


**ANTI-VIBRATION RUBBER BLOCK  
AVR (GENERIC)**



**ANTI-VIBRATION SPRING BLOCK  
AVS (GENERIC)**

## SPARE PARTS



	Code	Model	Qty
2	T02204043	TURBINE MBP 40 T4 0,55kW LG	x1
4	721001139	MOTOR 0,55kW T4 B5 230/400V	x1