

BOX BD 9/9 EEC (251289554ECV2)

GENERAL DATA



CENTRIFUGAL IN SOUNDPROOF CABINET WITH ELECTRONIC MOTOR

MANUFACTURING FEATURES:

- Impellers made of polyamide reinforced with fiberglass.
- BD EEC range fans assembled in soundproof cabinets with thermo-acoustic insulation, Bs1d0 fire class.
- Fan assembled on antivibration mountings.
- Connection gland included.
- Motor fixing with an exclusive system designed by Casals through flexible arms and silent blocks to avoid vibration. Flexible arms in compliance with the ROHS 2002/95/EC Directive (Restriction of the Use of Certain Hazardous Substances in Electrical and Electronic Equipments).
- PM brushless motor (permanent magnets), synchronous, electronically commutated, high efficiency and low sound level. Specially designed for fans with electronic operation and control in deported box IP65.

Working range: from 400 to 1200-2000rpm (depending on the models)

Motor with IP54 protection and class F insulation. IP 65 drive case

Power: 220V \pm 10% single phase

Power frequency: 50 / 60Hz

Operating temperature range: -20°C to 50°C

Speed control through signal 0-10V or PWM

APPLICATIONS:

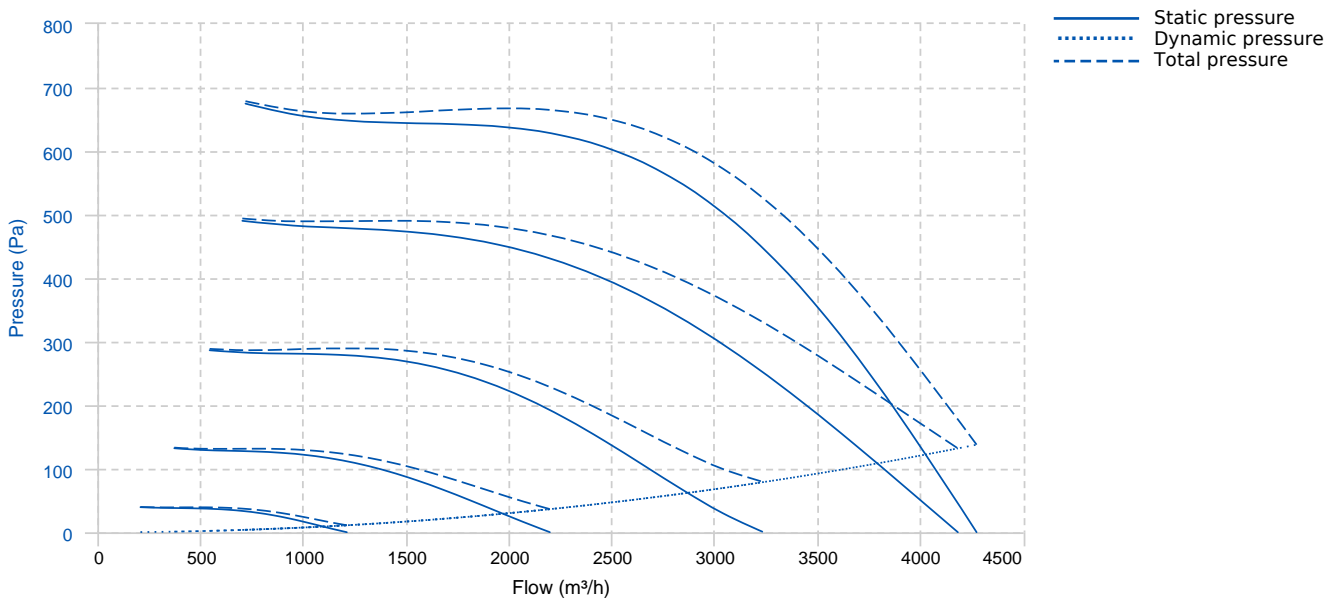
Designed for inline installation, indoor or outdoor assembly, they are suitable for:

- Air renewal in buildings and industries.
- Industrial and professional kitchen hoods.
- Maximum working temperature: 50°C.

UNDER REQUEST:

- LG0 position.
- Impellers made of galvanised steel sheet.

PERFORMANCE CURVE



TECHNICAL DATA

Fan

RPM	2000	Approx. weight	32 kg	Max. Flow	4280 m³/h
-----	------	----------------	-------	-----------	-----------

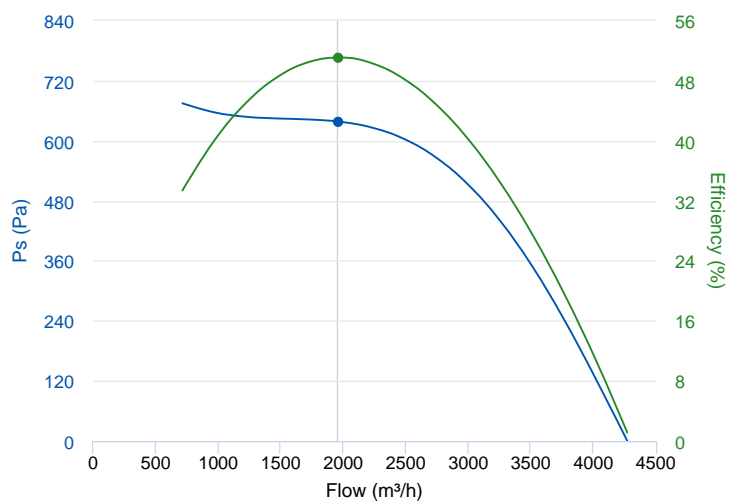
Motor

Power	0,75 kW	RPM	2000 (máx)	I max. (230V)	6 A	Approx. weight	0 kg
-------	---------	-----	------------	---------------	-----	----------------	------

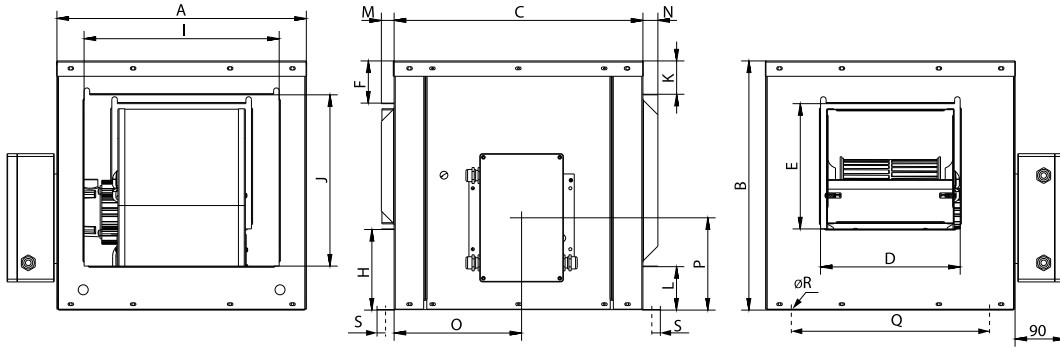
ERP DATA

Fan data sheet

Fan type	Unit for non-residential ventilation (LOT 6)	
Typology	Unidirectional	
reports.other	None	
Type of driver	None	
Motor power (kW)	0.75	
	Fan values	ERP Requirements 2018
Max. efficiency (%)	51.08	39.9
Effic. Heat recovery (%)	-	
Pabs (kW)	0.712	
Flow (m³/h)	1959.62	
Static pressure (Pa)	638.44	
Speed (m/s)	6.96	
SFP (W/m3/s)	1308.75	



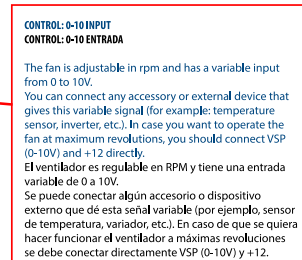
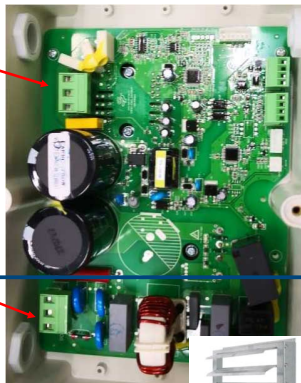
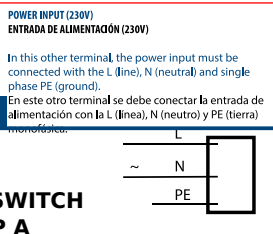
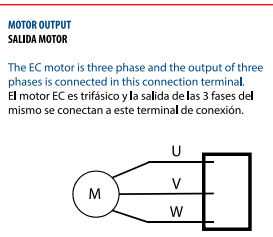
DIMENSIONS



Dimensions (mm)

A	535	B	535	C	535	D	311	E	268
F	96	H	169	I	418	J	359	K	78
L	96	M	23	N	27	O	240	P	216.5
Q	478,5	R	10	S	17				

WIRING DIAGRAM



ACCESSORIES



SAFETY SWITCH
INT 25 3P A
REF: INT253PA



METALLIC GRAVITY SHUTTER FOR CABINET FANS. CERTIFIED 400°C/2H
PI 25/25 (9/9)
REF: 970250100

INLET BLIND COVER
TCA 7
REF: 960001112



INLET/OUTLET ROUND COVER
TIAC 2 (OUT)
REF: 960001352



INLET/OUTLET ROUND COVER
TIAC 13 (IN)
REF: 960001363



OUTDOOR FLANGE WITH BIRD GUARD
VIS IN 9
REF: 960000052



SPEED CONTROLLER FOR EEC MOTOR
REGC
REF: FX263300



RECTANGULAR-CIRCULAR ANTI-VIBRATION
FLANGE
BAC 2 (OUT 9/9)
REF: 960002952



RECTANGULAR-CIRCULAR ANTI-VIBRATION
FLANGE
BAC 13 (IN BOX BD/BV 9/9)
REF: 960002963



OUTDOOR FLANGE WITH BIRD GUARD
VIS OUT 9
REF: 960000050



SPARE PARTS

	Code	Model	Qty
1	301002100LP5	MOTOR EEC750 LP	x1
2	301002104R200	ELECTRONICAL DEVICE EEC750 2000RPM	x1
3	251289383	TURBINE PA6 BD9/9	x1