

BOX BD 10/10 EEC (251379554EC)

GENERAL DATA



CENTRIFUGAL IN SOUNDPROOF CABINET WITH ELECTRONIC MOTOR

MANUFACTURING FEATURES:

- Impellers made of polyamide reinforced with fiberglass.
- BD EEC range fans assembled in soundproof cabinets with thermo-acoustic insulation, Bs1d0 fire class.
- Fan assembled on antivibration mountings.
- Connection gland included.
- Motor fixing with an exclusive system designed by Casals through flexible arms and silent blocks to avoid vibration. Flexible arms in compliance with the ROHS 2002/95/EC Directive (Restriction of the Use of Certain Hazardous Substances in Electrical and Electronic Equipments).
- PM brushless motor (permanent magnets), synchronous, electronically commutated, high efficiency and low sound level. Specially designed for fans with electronic operation and control in deported box IP65.

Working range: from 400 to 1200-2000rpm (depending on the models)

Motor with IP54 protection and class F insulation. IP 65 drive case

Power: 220V \pm 10% single phase

Power frequency: 50 / 60Hz

Operating temperature range: -20°C to 50°C

Speed control through signal 0-10V or PWM

APPLICATIONS:

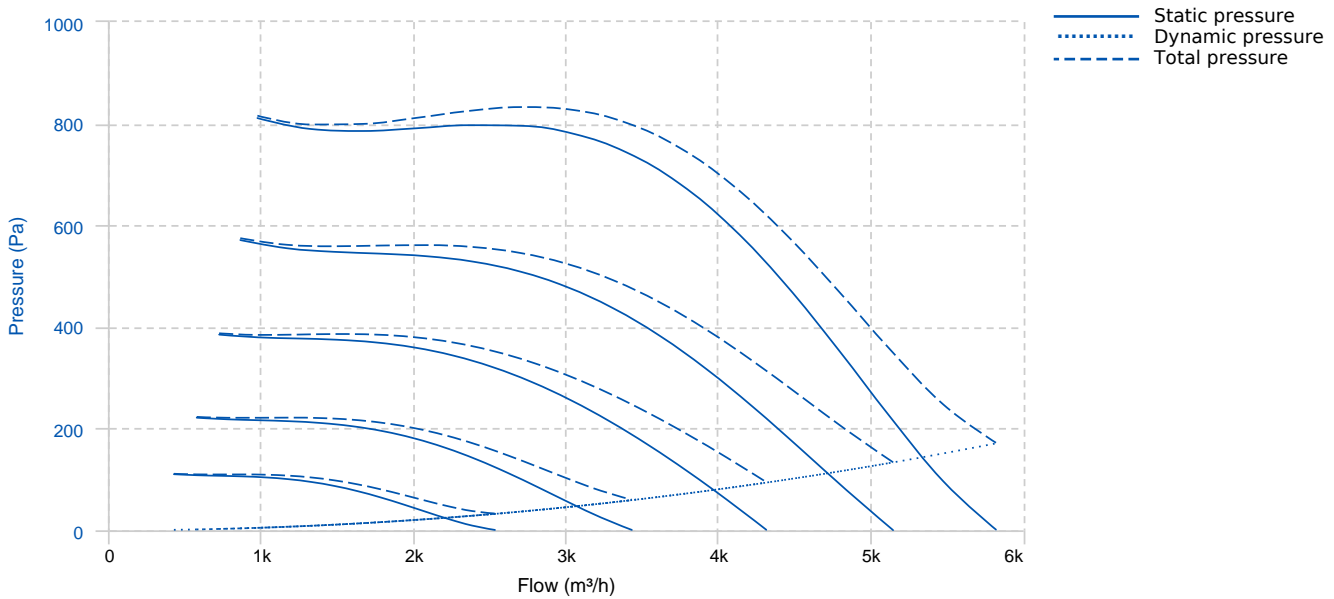
Designed for inline installation, indoor or outdoor assembly, they are suitable for:

- Air renewal in buildings and industries.
- Industrial and professional kitchen hoods.
- Maximum working temperature: 50°C.

UNDER REQUEST:

- LG0 position.
- Impellers made of galvanised steel sheet.

PERFORMANCE CURVE



TECHNICAL DATA

Fan

RPM	1800	Approx. weight	31 kg	Max. Flow	5820 m³/h
-----	------	----------------	-------	-----------	-----------

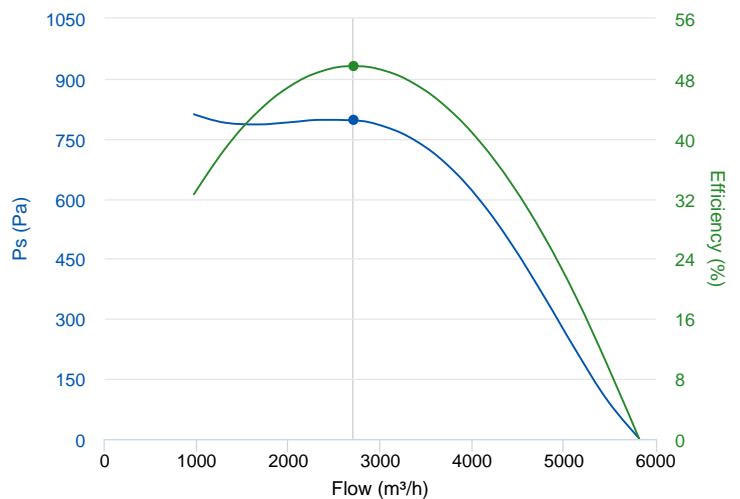
Motor

Power	1,5 kW	RPM	1800 (max)	I max. (230V)	10 A	Approx. weight	0 kg
-------	--------	-----	------------	---------------	------	----------------	------

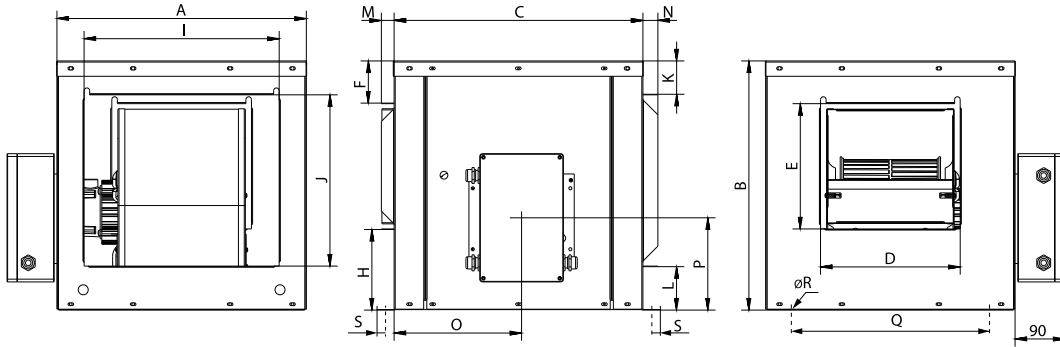
ERP DATA

Fan data sheet

Fan type	Unit for non-residential ventilation (LOT 6)	
Typology	Unidirectional	
reports.other	None	
Type of driver	None	
Motor power (kW)	1.5	
	Fan values	ERP Requirements 2018
Max. efficiency (%)	49.67	43.23
Effic. Heat recovery (%)	-	
Pabs (kW)	1.219	
Flow (m³/h)	2711.36	
Static pressure (Pa)	795.93	
Speed (m/s)	7.87	
SFP (W/m3/s)	1619.15	



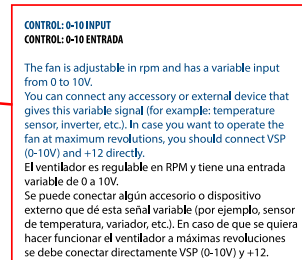
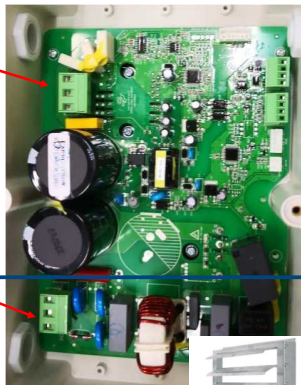
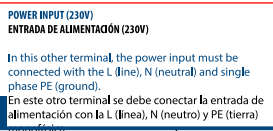
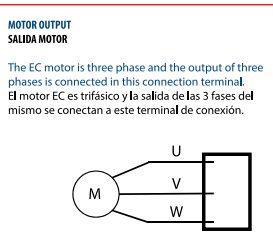
DIMENSIONS



Dimensions (mm)

A	580	B	580	C	580	D	342	E	299
F	84	H	195	I	493	J	421	K	69
L	88	M	23	N	27	O	240	P	241.6
Q	522,4	R	10	S	17				

WIRING DIAGRAM



ACCESSORIES



SAFETY SWITCH
INT 25 3P A
REF: INT253PA



METALLIC GRAVITY SHUTTER FOR CABINET FANS. CERTIFIED 400°C/2H
PI 28/28 (10/10)
REF: 970280100

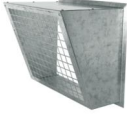
INLET BLIND COVER
TCA 8
REF: 960001113



INLET/OUTLET ROUND COVER
TIAC 3 (OUT)
REF: 960001353



OUTDOOR FLANGE WITH BIRD GUARD
VIS OUT 10
REF: 960000051



INLET/OUTLET ROUND COVER
TIAC 14 (IN)
REF: 960001364

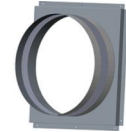


OUTDOOR FLANGE WITH BIRD GUARD
VIS IN 10
REF: 960000053



SPEED CONTROLLER FOR EEC MOTOR
REGC
REF: FX263300

RECTANGULAR-CIRCULAR ANTI-VIBRATION
FLANGE
BAC 3 (OUT 10/10)
REF: 960002953



RECTANGULAR-CIRCULAR ANTI-VIBRATION
FLANGE
BAC 14 (IN BOX BD/BV 10/10)
REF: 960002964

SPARE PARTS

	Code	Model	Qty
1	301002200LP4	MOTOR EEC1500 LP Ø1/2"	x1
2	301002204R180	ELECTRONICAL DEVICE EEC1500 1800RPM	x1
3	251379383	TURBINE PA6 BD10/10	x1