

# BD 15/15 T6 2,2kW (252370106)

## GENERAL DATA



### FAN DOUBLE INLET

#### MANUFACTURING FEATURES:

- Galvanised steel sheet housing.
- Polyamide impeller reinforced with fibreglass in models 7/7, 9/9, 10/10 and 12/12. The impeller of the rest of models are made of galvanised steel sheet.
- Double inlet forward curved impeller in all models.
- Supplied with mounting feet (included in price).
- Exclusive system Casals fixing motor and turbine fan by flexible arms silent blocks to avoid any vibration. Arms in compliance with ROHS regulations 2002/95 / EC (Restriction of Hazardous Substances in electrical and electronic equipment)
- Closed motors specially designed Casals: extruded aluminum housing, all protected inside the terminal box on the motor IP 65 protection and motor with IP54 protection and Class F insulation standard voltages: 230V 50Hz in single phase and 230/400V 50Hz three-phase.
- Single phase motors with controllable voltage speed. Three phase motors controllable using a frequency speed controller

#### APPLICATIONS:

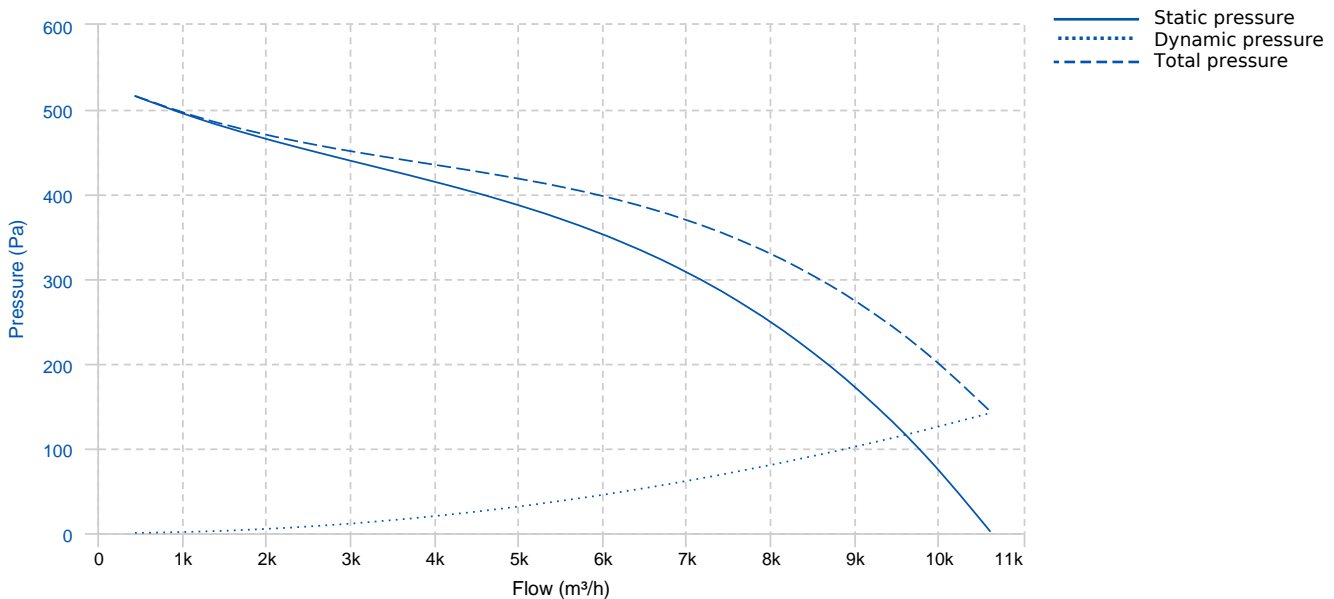
Designed for assembly in equipment:

- Ventilation boxes and air handling units.
- Centrifugal heaters.
- Industrial and professional kitchen hoods.
- Maximum working temperature: 50°C for single phase motors and 60°C for three phase motors.

#### UNDER REQUEST

- Impeller made of galvanized steel sheet.
- MBI assembled

## PERFORMANCE CURVE

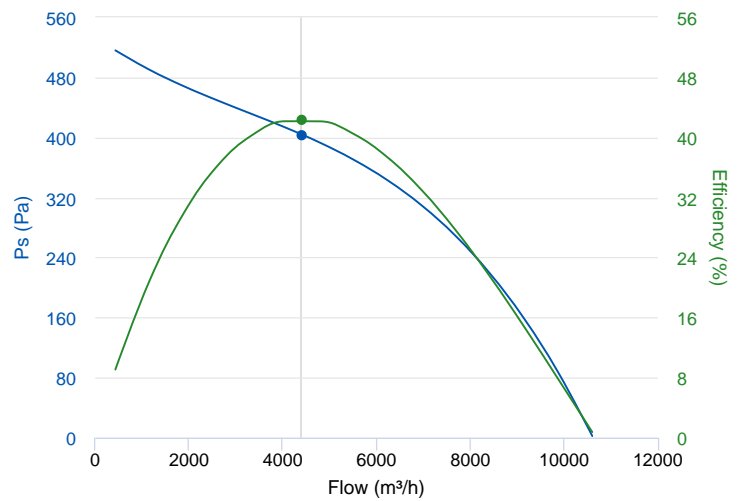


## TECHNICAL DATA

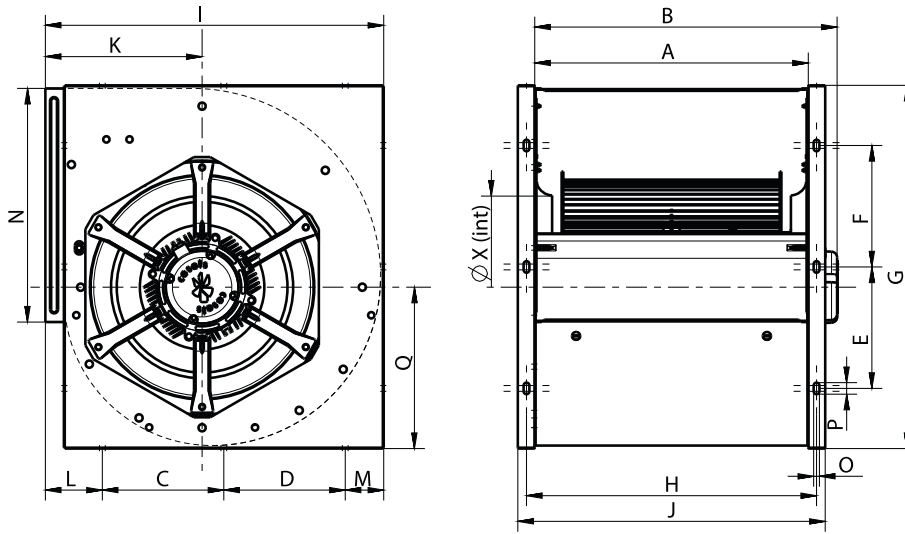
Fan							
RPM	900	Approx. weight	57 kg	Max. Flow	10600 m <sup>3</sup> /h		
Motor							
Power	2,2 kW	RPM	900	I max. (230V)	10,92 A	I max. (400V)	6,31 A
Size	STC100	Approx. weight	17 kg	Efficiency (%)	83.5 %		

## ERP DATA

Fan data sheet		
Fan type	Centrifugal fan radial or forward blades	
Installation category	A: Outlet and Inlet free discharge	
Efficiency category	Static	
The fan has to be installed with VF	No	
Motor power (kW)	2.2	
	Fan values	ERP Requirements 2015
Max. efficiency (%)	42.37	38.2
Efficiency grade (N)	48.18	44
Pabs (kW)	1.212	
Flow (m <sup>3</sup> /h)	4414.47	
Static pressure (Pa)	403.8	
Speed (m/s)	900	
Specific ratio	1.00	



## DIMENSIONS

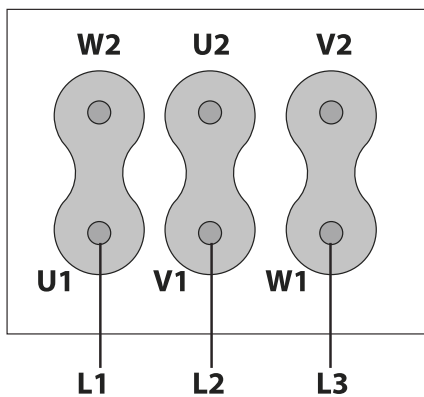


Dimensions (mm)

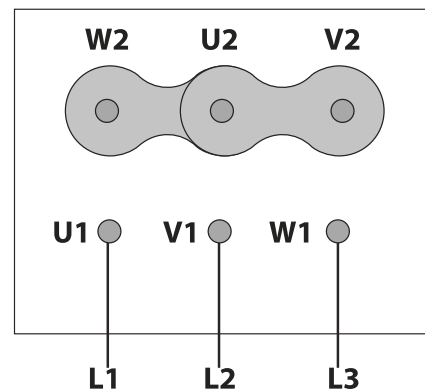
A	473	B	522,8	C	210	D	210	E	210
F	210	G	628	H	501,5	I	585	J	531,5
K	271	L	98,5	M	66,5	N	404	O	10
P	20	Q	279	X	315				

## WIRING DIAGRAM

230V 



400V 



## ACCESSORIES



**SAFETY SWITCH**  
**INT 25 3P A**  
**REF: INT253PA**



**OUTLET PROTECTION GUARD FOR FANS**  
**RI 15/15**  
**REF: 960000409**



**INLET PROTECTION GUARD FOR CENTRIFUGAL FANS**  
**RA 15**  
**REF: 960690100**

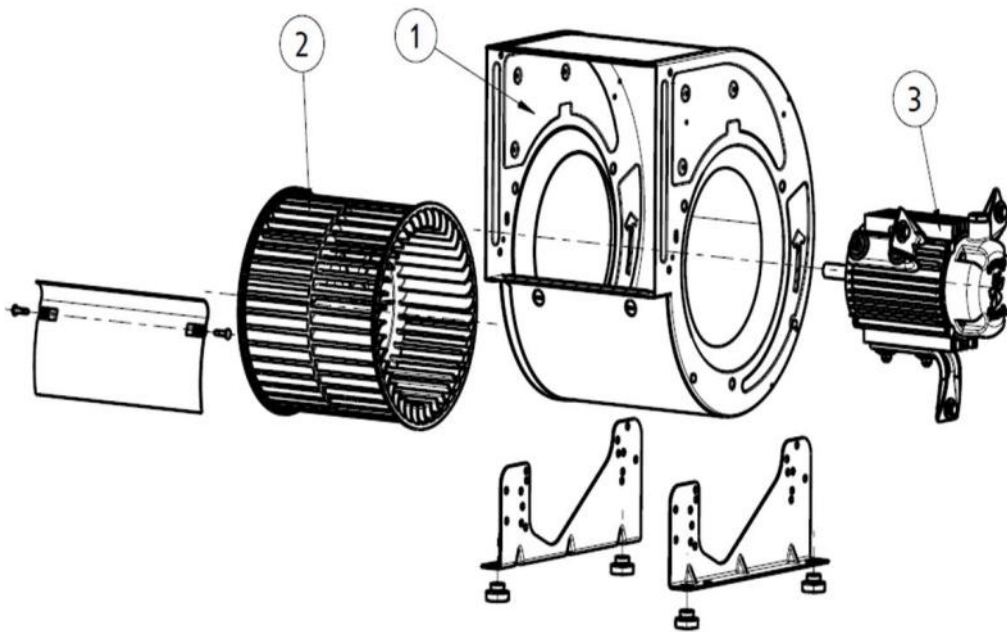


**OUTLET FLANGE FOR BD AND BV FANS**  
**MBI 15/15**  
**REF: 252371691**



**FREQUENCY SPEED CONTROLLER**  
**SFC 400 III 8A \***  
**REF: SFC400III8**

## SPARE PARTS



	Code	Model	Qty
2	252379382	TURBINE BD 15/15	x1
3	252379476	MOTOR+SUPPORTS BD39T6-3 M/C	x1
3	721081261	MOTOR BD T6 2,2kW 230/400V	x1