

DHUMAT 630 T6 1,5KW (245630182)

GENERAL DATA



SMOKE EXTRACTION BACKWARD CASING FAN 400°C/2h

MANUFACTURING FEATURES

CASING:

- Made of galvanized steel sheet with connection flanges and inspection door.
- Changeable panels.

MOTOR SUPPORT:

- Galvanised steel plate, motor with flanges fixed on 2 supports. Removable plate / support / impeller set.

IMPELLER:

- Backward centrifugal impeller, made of galvanised steel, dynamically balanced and self-cleaning.
- Direct drive on the motor shaft.

MOTOR:

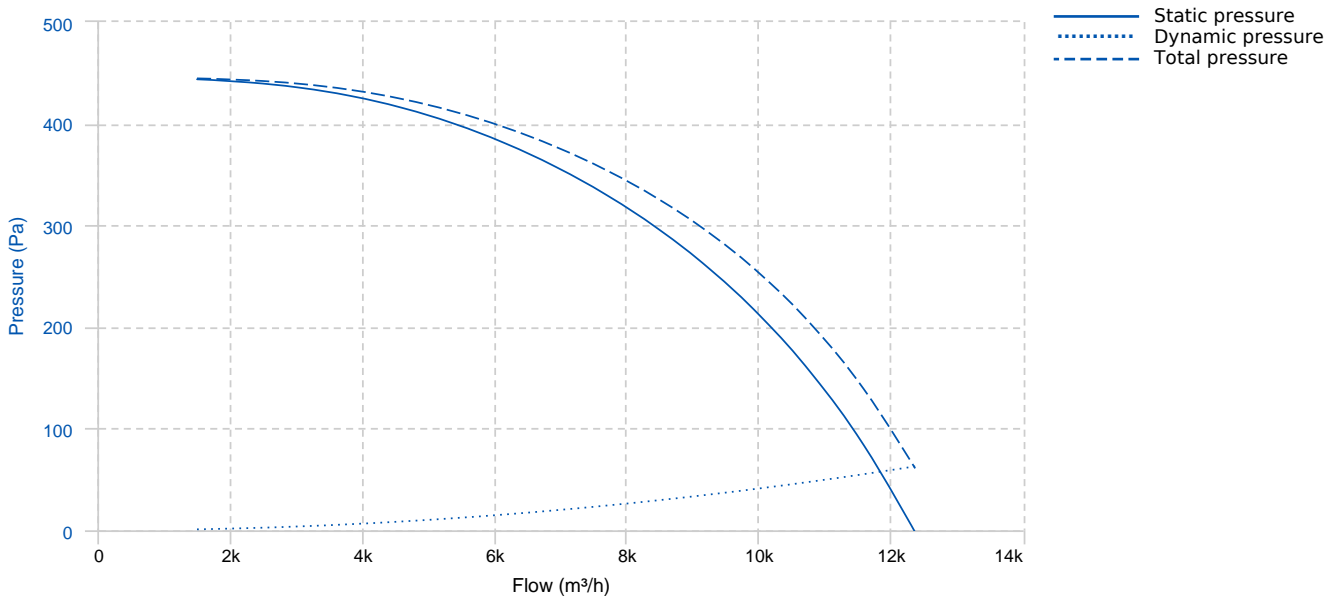
- Three phase motor with IP-55 protection and F class insulation. Manufactured with standard voltages for one speed motors: 230/400V 50Hz up to 4 Kw and 400/690V 50Hz for higher powers of 4 and 6 poles. 2 speed motors: Dahlander 400V 50Hz

APPLICATIONS

- Smoke extraction in high buildings and establishments with people.
- Ventilation and smoke exhaust in covered parkings.
- Ventilation in technical, industrial or commercial facilities.
- Maximum continuous working temperature: carried air 110°C, environment 60°C.

Official homologation by the European laboratory APPLUS according to EN 12101-3:2015 Certification Nr: 0370-CPR-2861

PERFORMANCE CURVE



TECHNICAL DATA

Fan

RPM	940	Approx. weight	229 kg	Max. Flow	12360 m³/h
-----	-----	----------------	--------	-----------	------------

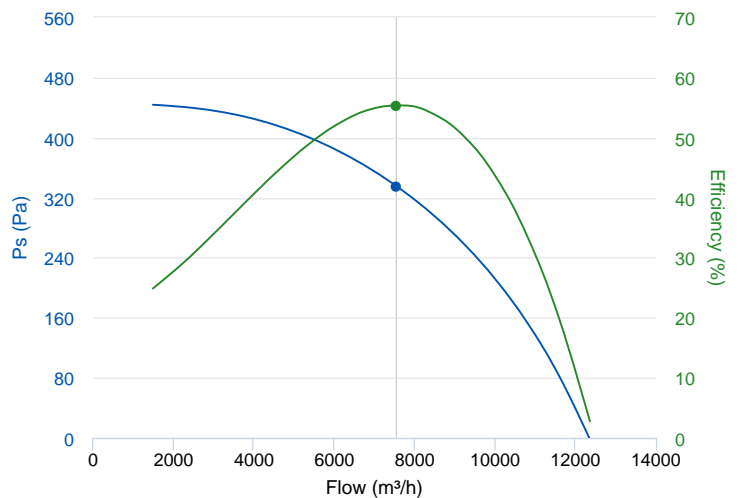
Motor

Power	1,5 kW	RPM	940	I max. (230V)	6,45 A	I max. (400V)	3,71 A
Size	100L	Approx. weight	28.5 kg	Efficiency (%)	82.5 %	FP	0.73

ERP DATA

Fan data sheet

Fan type	Unit for non-residential ventilation (LOT 6)	
Typology	Unidirectional	
reports.other	None	
Type of driver	None	
Motor power (kW)	1.5	
	Fan values	ERP Requirements 2018
Max. efficiency (%)	55.38	43.82
Effic. Heat recovery (%)	-	
Pabs (kW)	1.342	
Flow (m³/h)	7556.35	
Static pressure (Pa)	334.89	
Speed (m/s)	6.26	

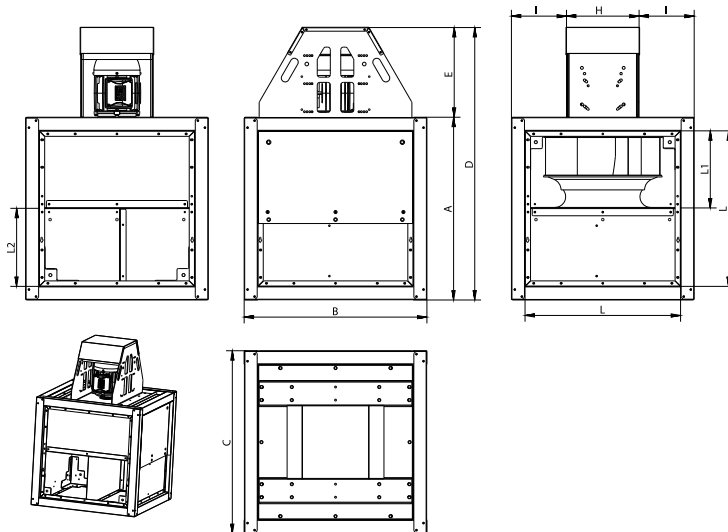




Fan values	ERP Requirements 2018
------------	-----------------------

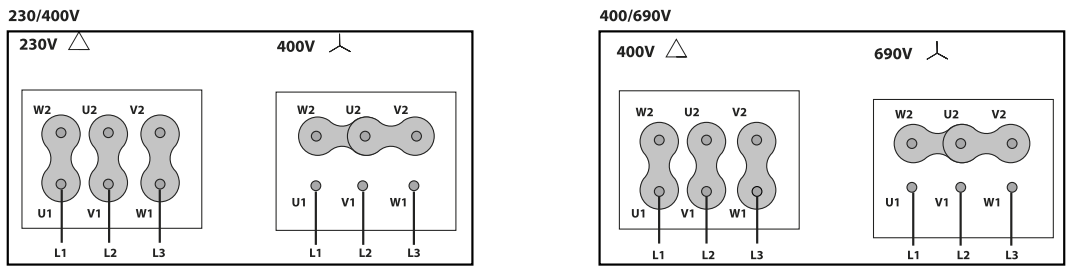
SFP (W/m3/s)	639.14
--------------	--------

DIMENSIONS



Dimensions (mm)									
A	1000	B	1000	C	1000	D	1426	E	426
H	340	I	330	K	26	L	895,7	L1	366,8
L2	527,4								

WIRING DIAGRAM



ACCESSORIES



**SAFETY SWITCH
INT 25 3P A**
REF: INT253PA



**SAFETY SWITCH FOR 400°C/2h
INT 400 25A 3P**
REF: 508902501



**OUTLET FLANGE FOR DHUMAT
EI DHUMAT 630**
REF: 965630111



**DHUMAT FEET KIT
DKF 630**
REF: 245639201



**OUTDOOR FLANGE WITH BIRD GUARD FOR
DHUMAT
VIS DHUMAT 630**
REF: 965560001



**FREQUENCY SPEED CONTROLLER
SFC 230 I 7A ***
REF: SFC230I007



**FREQUENCY SPEED CONTROLLER
SFC 400 III 5A ***
REF: SFC400III5

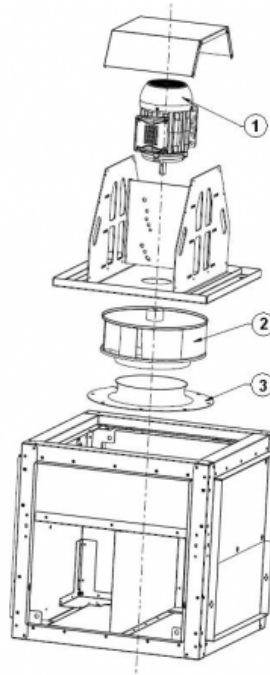


**ANTI-VIBRATION RUBBER BLOCK
AVR (GENERIC)**



**ANTI-VIBRATION SPRING BLOCK
AVS (GENERIC)**

SPARE PARTS



	Code	Model	Qty
1	721001254	MOTOR 1,5kW T6 B3 230/400V	x1

	Code	Model	Qty
2	279639381	TURBINE THRE R63B1 630X180x28 RD	x1
3	279631680	INLET CONE ED11 630	x1