

DHUMAT 710 T6 2,2KW (245710181)

GENERAL DATA



SMOKE EXTRACTION BACKWARD CASING FAN 400°C/2h

MANUFACTURING FEATURES

CASING:

- Made of galvanized steel sheet with connection flanges and inspection door.
- Changeable panels.

MOTOR SUPPORT:

- Galvanised steel plate, motor with flanges fixed on 2 supports. Removable plate / support / impeller set.

IMPELLER:

- Backward centrifugal impeller, made of galvanised steel, dynamically balanced and self-cleaning.
- Direct drive on the motor shaft.

MOTOR:

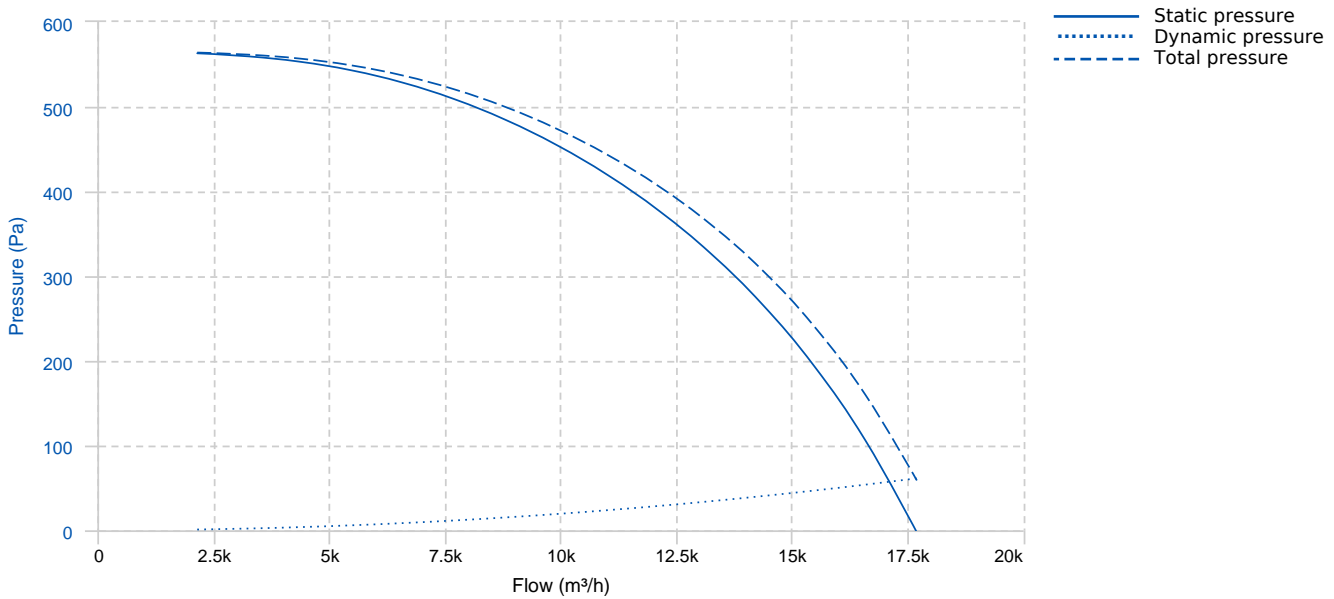
- Three phase motor with IP-55 protection and F class insulation. Manufactured with standard voltages for one speed motors: 230/400V 50Hz up to 4 Kw and 400/690V 50Hz for higher powers of 4 and 6 poles. 2 speed motors: Dahlander 400V 50Hz

APPLICATIONS

- Smoke extraction in high buildings and establishments with people.
- Ventilation and smoke exhaust in covered parkings.
- Ventilation in technical, industrial or commercial facilities.
- Maximum continuous working temperature: carried air 110°C, environment 60°C.

Official homologation by the European laboratory APPLUS according to EN 12101-3:2015 Certification Nr: 0370-CPR-2861

PERFORMANCE CURVE



TECHNICAL DATA

Fan

RPM	965	Approx. weight	303 kg	Max. Flow	17700 m³/h
-----	-----	----------------	--------	-----------	------------

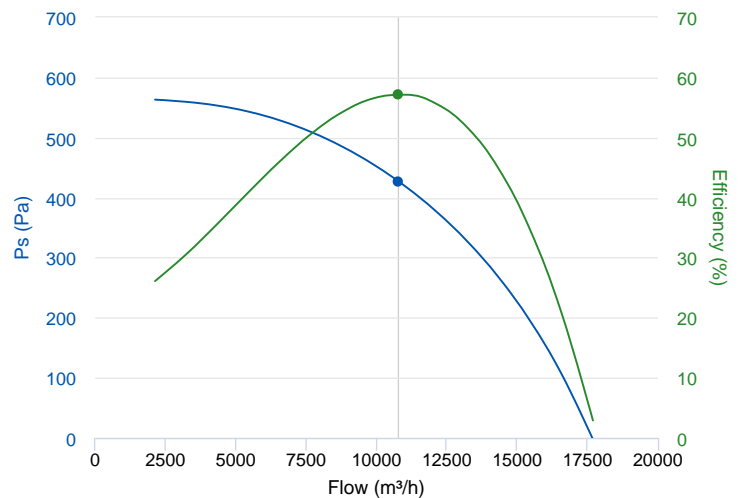
Motor

Power	2,2 kW	RPM	965	I max. (230V)	10,3 A	I max. (400V)	5,94 A
Size	112M	Approx. weight	38 kg	Efficiency (%)	84.3 %	FP	0.64

ERP DATA

Fan data sheet

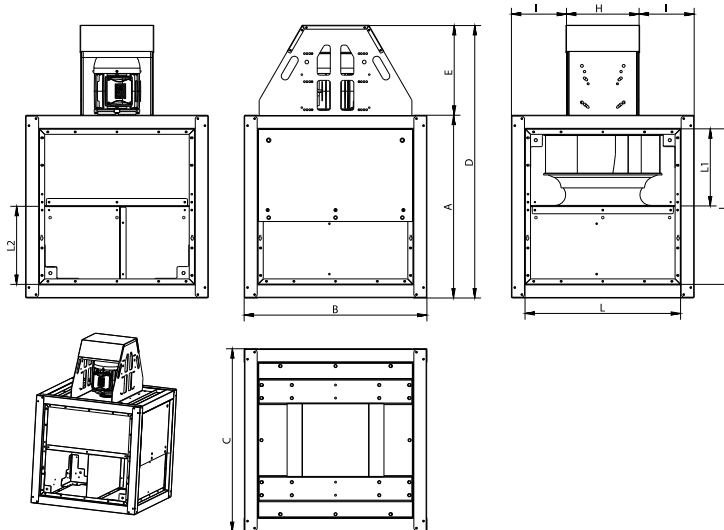
Fan type	Unit for non-residential ventilation (LOT 6)	
Typology	Unidirectional	
reports.other	None	
Type of driver	None	
Motor power (kW)	2.2	
	Fan values	ERP Requirements 2018
Max. efficiency (%)	57.17	47.34
Effic. Heat recovery (%)	-	
Pabs (kW)	2.367	
Flow (m³/h)	10795.1	
Static pressure (Pa)	426.66	
Speed (m/s)	6.17	



Fan values	ERP Requirements 2018
------------	-----------------------

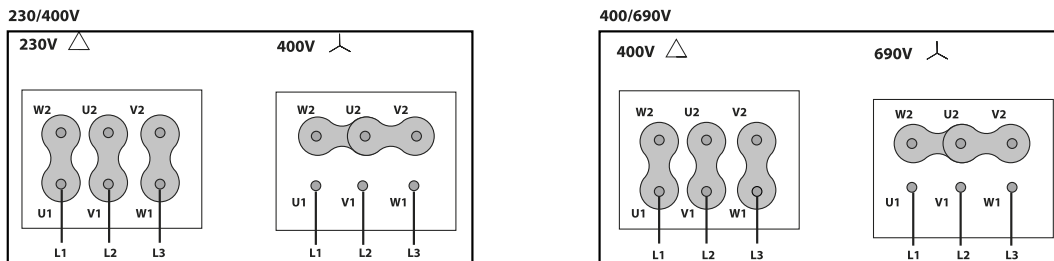
SFP (W/m3/s)	789.28
--------------	--------

DIMENSIONS



Dimensions (mm)									
A	1200	B	1200	C	1200	D	1656,5	E	456,5
H	374	I	413	K	26	L	1095,7	L1	440,5
L2	653,7								

WIRING DIAGRAM



ACCESSORIES



SAFETY SWITCH
INT 25 3P A
REF: INT253PA



SAFETY SWITCH FOR 400°C/2h
INT 400 25A 3P
REF: 508902501



OUTLET FLANGE FOR DHUMAT
EI DHUMAT 710
REF: 965710111



DHUMAT FEET KIT
DKF 710-800
REF: 245719201



OUTDOOR FLANGE WITH BIRD GUARD FOR
DHUMAT
VIS DHUMAT 710-800
REF: 965710001



FREQUENCY SPEED CONTROLLER
SFC 400 III 8A *
REF: SFC400III8

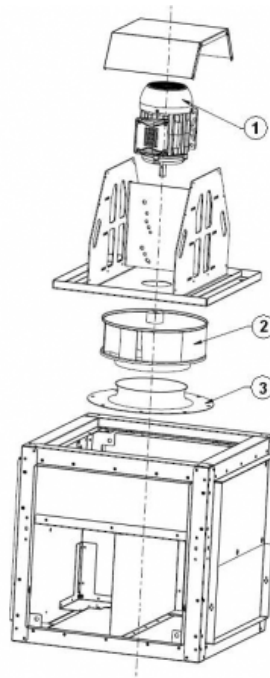


ANTI-VIBRATION RUBBER BLOCK
AVR (GENERIC)



ANTI-VIBRATION SPRING BLOCK
AVS (GENERIC)

SPARE PARTS



	Code	Model	Qty
1	721001260	MOTOR 2,2kW T6 B3 230/400V	x1
2	CTB-DH711-28LG	TURBINE DHUMAT 711 D.28 LG	x1
3	279711680	INLET CONE ED11 710	x1