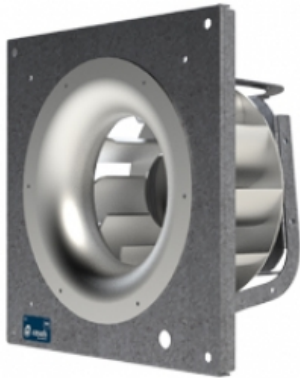


ENKELFAN 190 EEC (ENKEC190)

GENERAL DATA



CENTRIFUGAL FAN WITH EXTERNAL ROTOR EC MOTOR

MANUFACTURING FEATURES

Plug-type fan with self-cleaning impeller with back curved blades (backward), high performance and single inlet, direct driven. Dynamically balanced to minimize noise and vibration. Polyamide reinforced impeller for models 155 and 190 and aluminum plate for the rest.

High efficiency, low noise external rotor EC motor. Speed control through a 0-10V or PWM signal. Single-phase 230V 50 / 60Hz power supply for models 155 to 310 and three-phase 400V 50 / 60Hz for sizes 355 and 450. IP54 motor and class B insulation. Frame and motor support arms made of galvanized steel.

APPLICATIONS

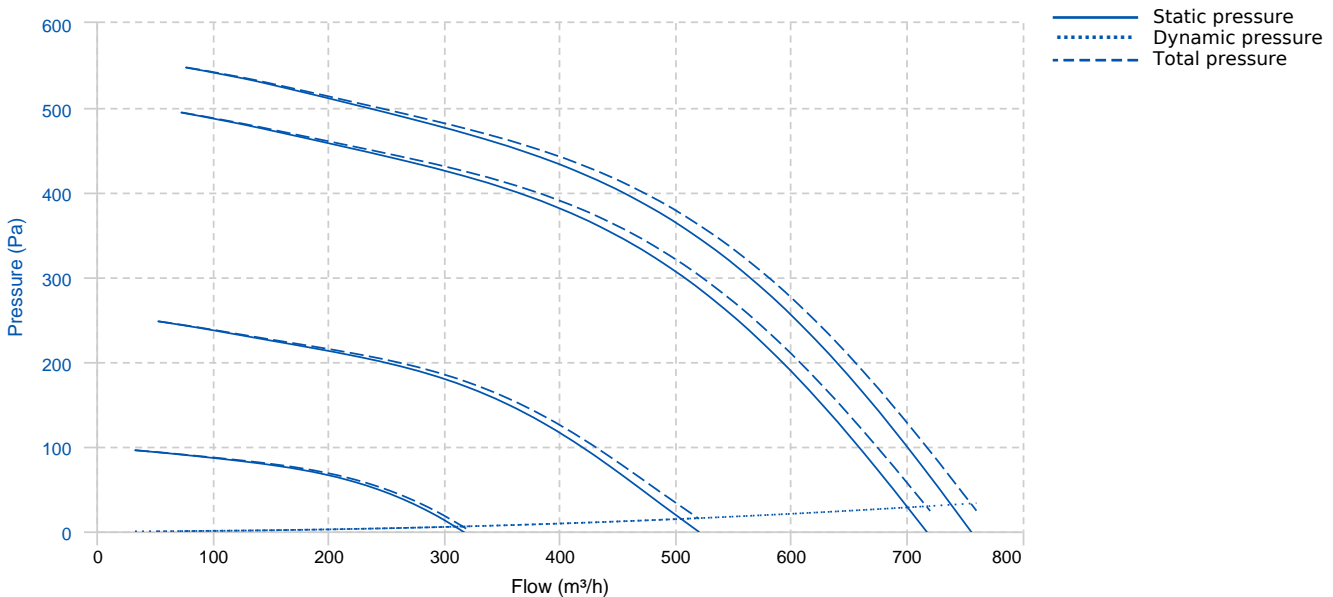
Ideal to integrate in air conditioners, plenums, compressors, dryers, booths, photovoltaic inverters.

Working temperature range from -20°C to 60°C.

UNDER REQUEST

- Fan (size between 250 and 450) with k-factor reading.

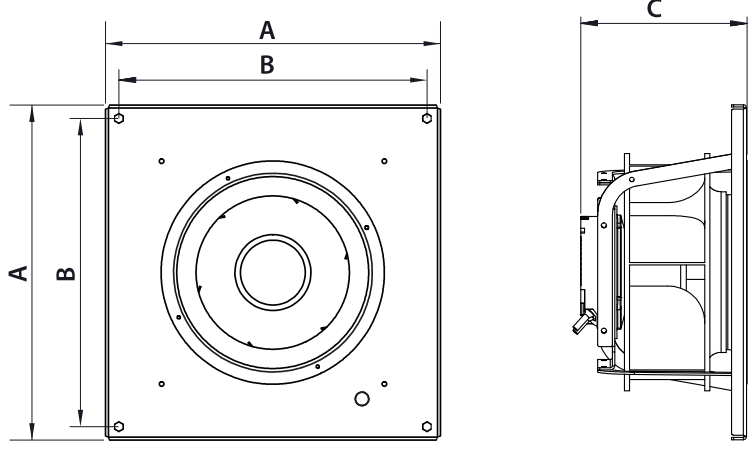
PERFORMANCE CURVE



TECHNICAL DATA

Fan							
RPM	3570	Approx. weight	4.5 kg	Max. Flow	760 m³/h		
Motor							
Power	0.095 kW	RPM	3570	I max. (230V)	0,73 A	Approx. weight	2.6 kg


DIMENSIONS



Dimensions (mm)					
A	280	B	244	C	106.5

WIRING DIAGRAM

Nº	Signal Señal	Colour Color	Specification Especificación
1	L	Brown Marrón	AC 220V/50Hz
2	N	Blue Azul	AC 220V/50Hz
3	Pe	Yellow-Green Amarillo-Verde	

Nº	Signal Señal	Colour Color	Specification Especificación
1	GND	Blue Azul	
2	Vsp	Yellow Amarillo	0-10 V/PWM
3	Vcc	Red Rojo	DC 10V
4	FG	White Blanco	1 Pulse/R

ACCESSORIES

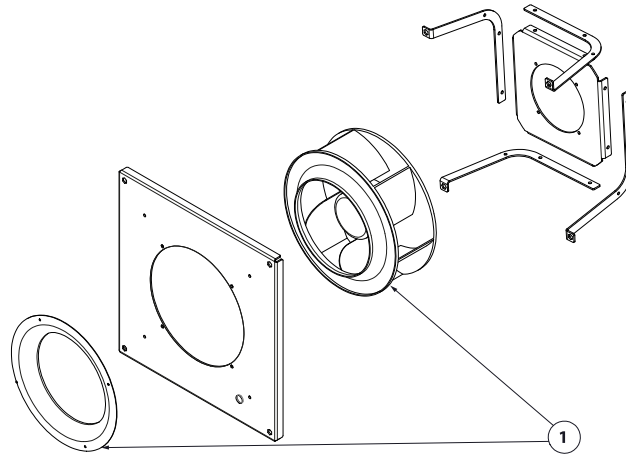


**SPEED CONTROLLER FOR EEC MOTOR
REGC
REF: FX263300**



**SPEED CONTROLLER WITH SAFETY SWITCH FOR
EEC MOTOR
PMR 25A
REF: PMREEC**

SPARE PARTS



	Code	Model	Qty
1	241203017	MOTOR-FAN+INLET CONE Ø190 230V 50/60Hz	x1