

# ENKELROOF-A 450 EEC (ENKRAEC450)

## GENERAL DATA

### ROOF FAN WITH ALUMINIUM COWL

#### MANUFACTURING FEATURES:



- Protection cowl made of anticorrosive treated aluminum easily removable for motor and impeller maintenance.
- Structure in anticorrosive galvanized steel and support frame for adaptation to the roof with anti-bird protection grid.
- High-efficiency backward-curved blade impeller with self-cleaning system. Reinforced polyamide impeller for models 155, 190 and 220. The rest of the models in aluminum.
- EC technology uses integral electronic control to ensure that the motor always runs at optimal load and ensures efficient energy utilization. It incorporates an external rotor EC motor with high efficiency and low noise level. Speed control through a 0-10V or PWM signal. 230V 50/60Hz single-phase power supply for models 155 to 310 and 400V 50/60Hz three-phase power supply for sizes 355 and 450. IP54 and motor class B insulation.

#### APPLICATIONS

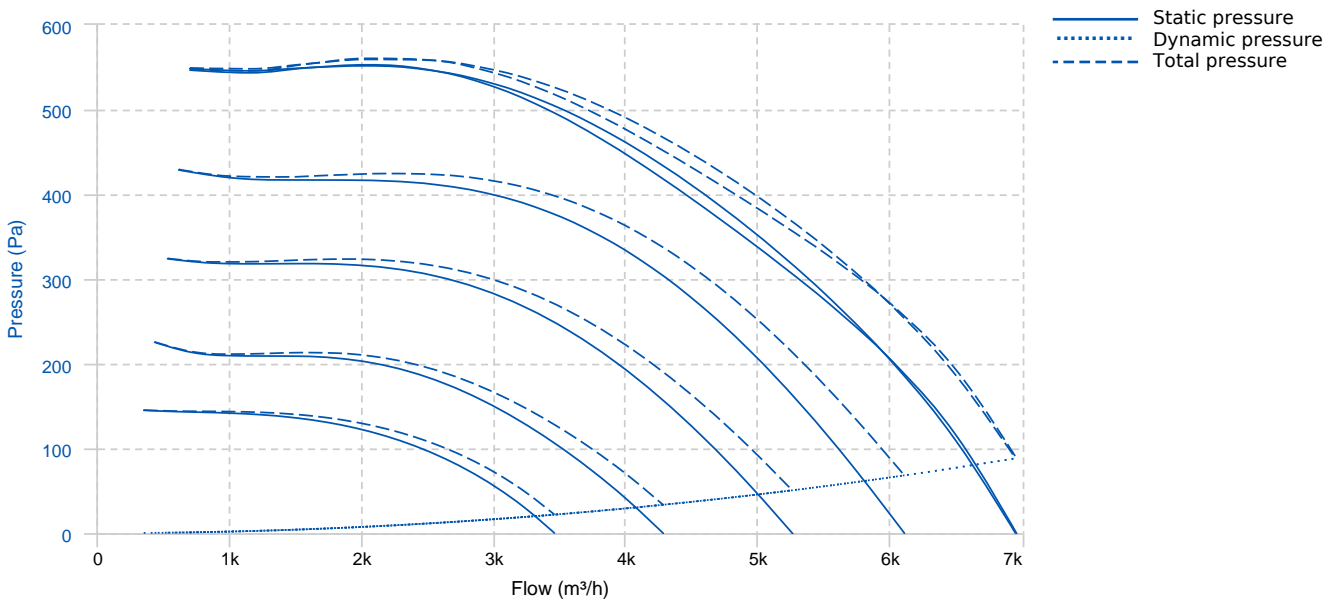
Designed for deck or roof mounting, they are indicated for:

- Smoke extraction.
- Air renewal in all types of buildings and industries.
- Working temperature range from -25°C to 60°C.

#### UNDER REQUEST

- Fan (size between 250 and 450) with k-factor reading.

## PERFORMANCE CURVE



## TECHNICAL DATA

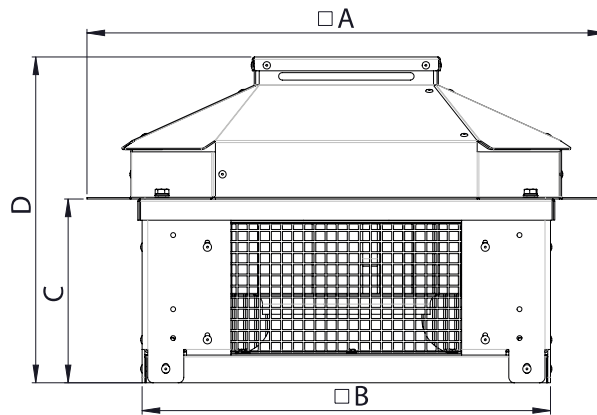
### Fan

RPM	1450	Approx. weight	19 kg	Max. Flow	6955 m <sup>3</sup> /h
-----	------	----------------	-------	-----------	------------------------

### Motor

Power	1.006 kW	RPM	1450	I max. (400V)	1,67 A	Approx. weight	12 kg
-------	----------	-----	------	---------------	--------	----------------	-------


## DIMENSIONS




### Dimensions (mm)

A	765	B	601	C	337.5	D	702.5
---	-----	---	-----	---	-------	---	-------

## WIRING DIAGRAM

Nº	Signal Señal	Colour Color	Specification Especificación
1	L1	Black Negro	AC380V-50/60Hz
2	L2	Black Negro	AC380V-50/60Hz
3	L3	Black Negro	AC380V-50/60Hz
4	Pe	Yellow-Green Amarillo-Verde	

Nº	Signal Señal	Colour Color	Specification Especificación
1	Vcc	Red Rojo	DC10V
2	Vsp	Yellow Amarillo	0-10VDC/PWM
3	GND	Blue Azul	
4	FG	White Blanco	12 Pulse/R

## ACCESSORIES



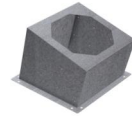
**CONNECTION FLANGE  
AC 400**  
REF: 960003212



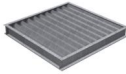
**CIRCULAR-CIRCULAR ANTI-VIBRATION FLANGE  
BAD 11 (Ø400)**  
REF: 960003461



**SPEED CONTROLLER WITH SAFETY SWITCH FOR  
EEC MOTOR  
PMR 25A**  
REF: PMREEC



**INCLINED ROOF FAN SUPPORT  
BTI 570**  
REF: 50870570XX



**DEPRESSION DUMPER (HORIZONTAL  
PLACEMENT)  
CMP-HHT 300x310**  
REF: CMPHHT3031

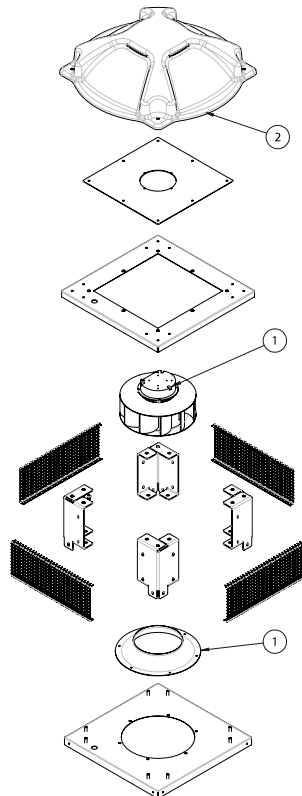


**ENKELROOF VERTICAL DISCHARGE  
KV ENKELROOF 450**  
REF: KVENKR450



**CIRCULAR SOUND ATTENUATOR IN GALVANISED  
STEEL  
SILC-MINI 400 C**  
REF: SILCM400C

## SPARE PARTS



	Code	Model	Qty
1	241453017	MOTOR-FAN+INLET CONE Ø450 400V 50/60Hz	x1
2	279404478A	ROOF COWL ENK.355-450 KEN. 355-400 (AI)	x1