

# DHUMAT 355 T2 2,2KW (245350182)

## GENERAL DATA



### SMOKE EXTRACTION BACKWARD CASING FAN 400°C/2h

#### MANUFACTURING FEATURES

##### CASING:

- Made of galvanized steel sheet with connection flanges and inspection door.
- Changeable panels.

##### MOTOR SUPPORT:

- Galvanised steel plate, motor with flanges fixed on 2 supports. Removable plate / support / impeller set.

##### IMPELLER:

- Backward centrifugal impeller, made of galvanised steel, dynamically balanced and self-cleaning.
- Direct drive on the motor shaft.

##### MOTOR:

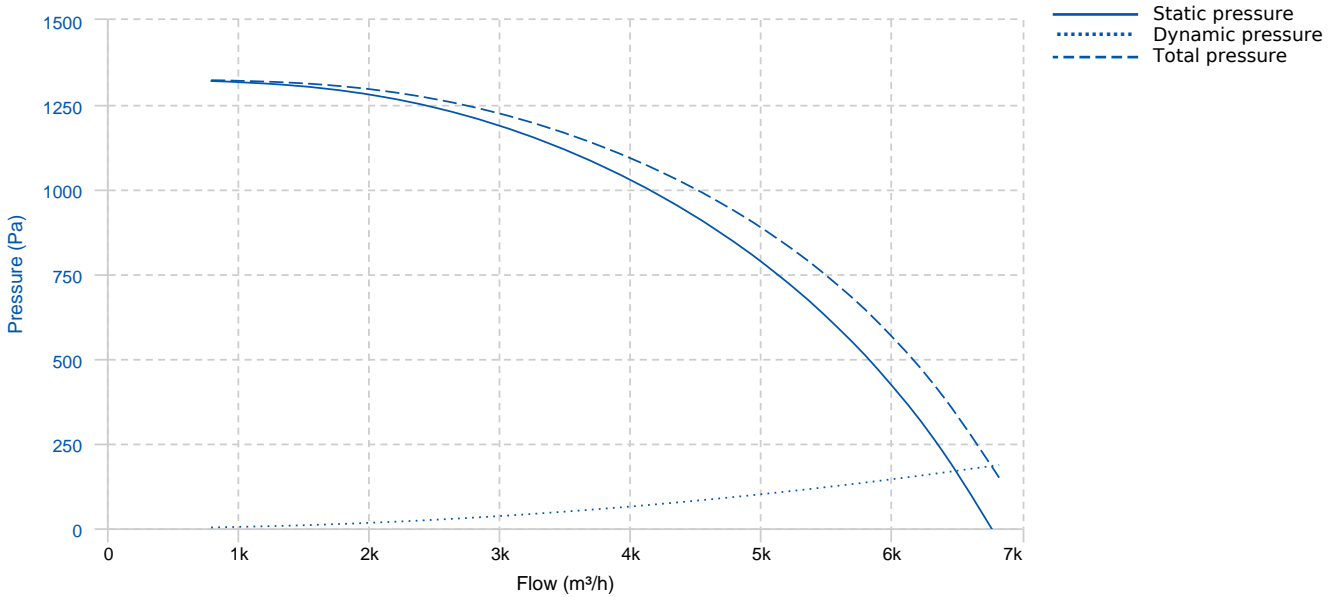
- Three phase motor with IP-55 protection and F class insulation. Manufactured with standard voltages for one speed motors: 230/400V 50Hz up to 4 Kw and 400/690V 50Hz for higher powers of 4 and 6 poles. 2 speed motors: Dahlander 400V 50Hz

##### APPLICATIONS

- Smoke extraction in high buildings and establishments with people.
- Ventilation and smoke exhaust in covered parkings.
- Ventilation in technical, industrial or commercial facilities.
- Maximum continuous working temperature: carried air 110°C, environment 60°C.

Official homologation by the European laboratory APPLUS according to EN 12101-3:2015 Certification Nr: 0370-CPR-2861

## PERFORMANCE CURVE



## TECHNICAL DATA

### Fan

RPM	2840	Approx. weight	73 kg	Max. Flow	6830 m³/h
-----	------	----------------	-------	-----------	-----------

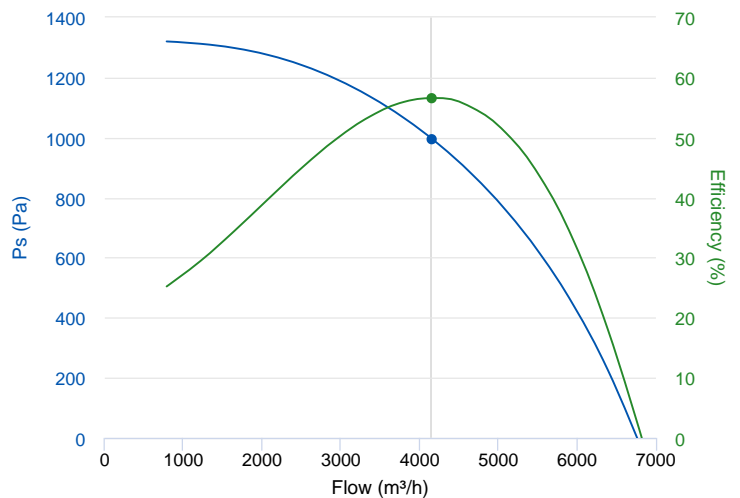
### Motor

Power	2,2 kW	RPM	2840	I max. (230V)	7,97 A	I max. (400V)	4,58 A
Size	90L	Approx. weight	25 kg	Efficiency (%)	85.9 %	FP	0.83

## ERP DATA

### Fan data sheet

Fan type	Unit for non-residential ventilation (LOT 6)	
Typology	Unidirectional	
reports.other	None	
Type of driver	None	
Motor power (kW)	2.2	
	<b>Fan values</b>	<b>ERP Requirements 2018</b>
Max. efficiency (%)	56.61	46.75
Effic. Heat recovery (%)	-	
Pabs (kW)	2.152	
Flow (m³/h)	4151.88	
Static pressure (Pa)	996.77	
Speed (m/s)	10.75	

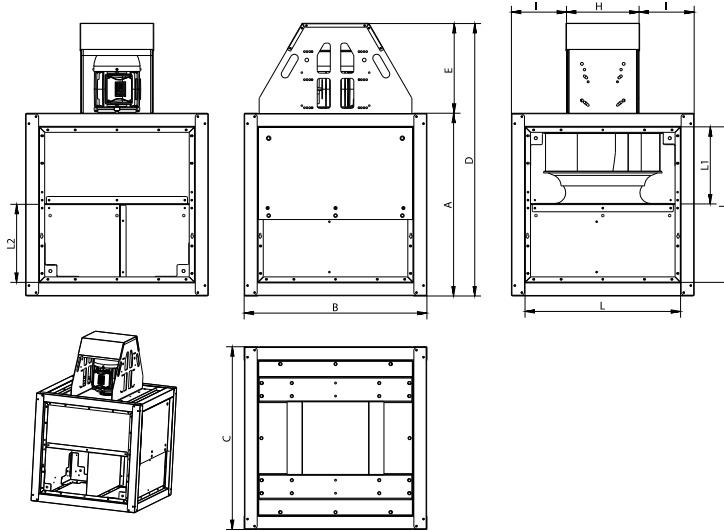




Fan values	ERP Requirements 2018
------------	-----------------------

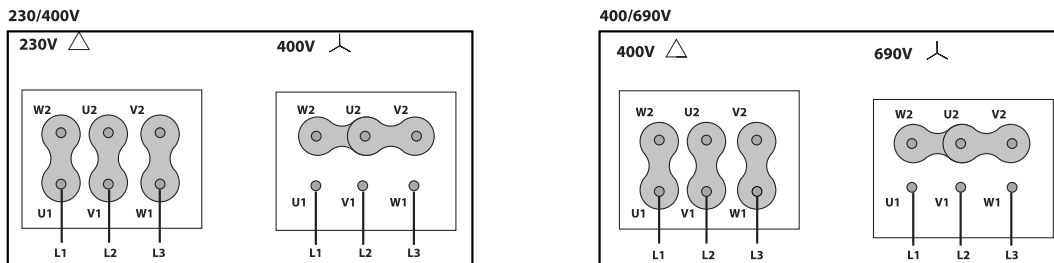
SFP (W/m3/s)	1865.66
--------------	---------

## DIMENSIONS



Dimensions (mm)									
A	600	B	600	C	600	D	912	E	312
H	278	I	161	K	26	L	495,7	L1	181,1
L2	313,1								

## WIRING DIAGRAM



## ACCESSORIES



**SAFETY SWITCH**  
INT 25 3P A  
REF: INT253PA



**SAFETY SWITCH FOR 400°C/2h**  
INT 400 25A 3P  
REF: 508902501



**OUTLET FLANGE FOR DHUMAT**  
EI DHUMAT 355  
REF: 965350111



**DHUMAT FEET KIT**  
DKF 315-355  
REF: 245319201



**OUTDOOR FLANGE WITH BIRD GUARD FOR**  
DHUMAT  
VIS DHUMAT 315-355  
REF: 965310001



**FREQUENCY SPEED CONTROLLER**  
SFC 230 I 10A \*  
REF: SFC230I0010



**FREQUENCY SPEED CONTROLLER**  
SFC 400 III 5A \*  
REF: SFC400III5

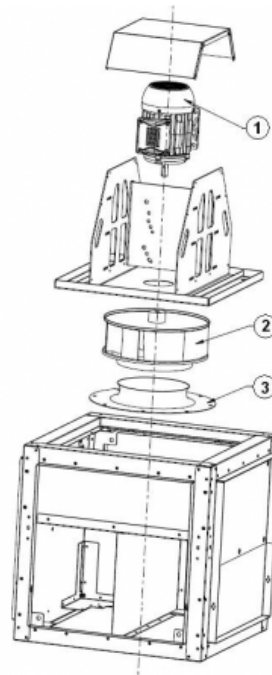


**ANTI-VIBRATION RUBBER BLOCK**  
AVR (GENERIC)



**ANTI-VIBRATION SPRING BLOCK**  
AVS (GENERIC)

## SPARE PARTS



	Code	Model	Qty
1	721001053	MOTOR 2,2kW T2 B3 230/400V	x1

	Code	Model	Qty
2	245359381	TURBINE DHUMAT 355-1 D24 LG	x1
3	279351680	INLET CONE ED11 355	x1