

DHUMAT 500 T4 1,5KW (245500181)

GENERAL DATA



SMOKE EXTRACTION BACKWARD CASING FAN 400°C/2h

MANUFACTURING FEATURES

CASING:

- Made of galvanized steel sheet with connection flanges and inspection door.
- Changeable panels.

MOTOR SUPPORT:

- Galvanised steel plate, motor with flanges fixed on 2 supports. Removable plate / support / impeller set.

IMPELLER:

- Backward centrifugal impeller, made of galvanised steel, dynamically balanced and self-cleaning.
- Direct drive on the motor shaft.

MOTOR:

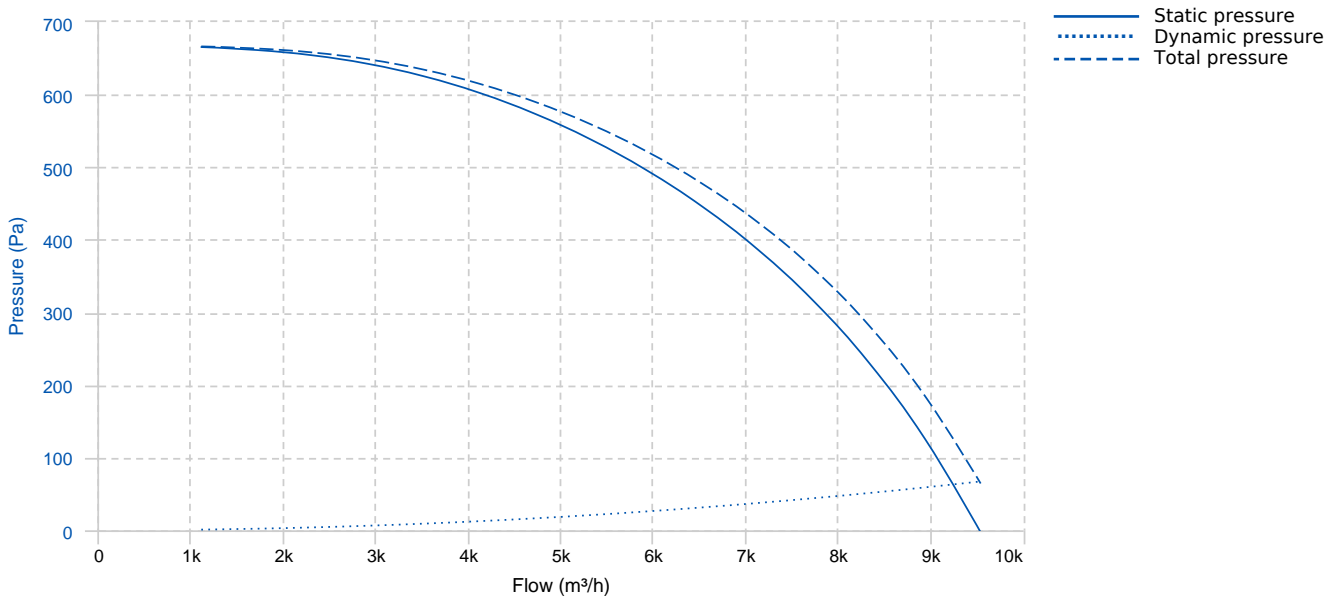
- Three phase motor with IP-55 protection and F class insulation. Manufactured with standard voltages for one speed motors: 230/400V 50Hz up to 4 Kw and 400/690V 50Hz for higher powers of 4 and 6 poles. 2 speed motors: Dahlander 400V 50Hz

APPLICATIONS

- Smoke extraction in high buildings and establishments with people.
- Ventilation and smoke exhaust in covered parkings.
- Ventilation in technical, industrial or commercial facilities.
- Maximum continuous working temperature: carried air 110°C, environment 60°C.

Official homologation by the European laboratory APPLUS according to EN 12101-3:2015 Certification Nr: 0370-CPR-2861

PERFORMANCE CURVE



TECHNICAL DATA

Fan

RPM	1450	Approx. weight	153 kg	Max. Flow	9540 m³/h
-----	------	----------------	--------	-----------	-----------

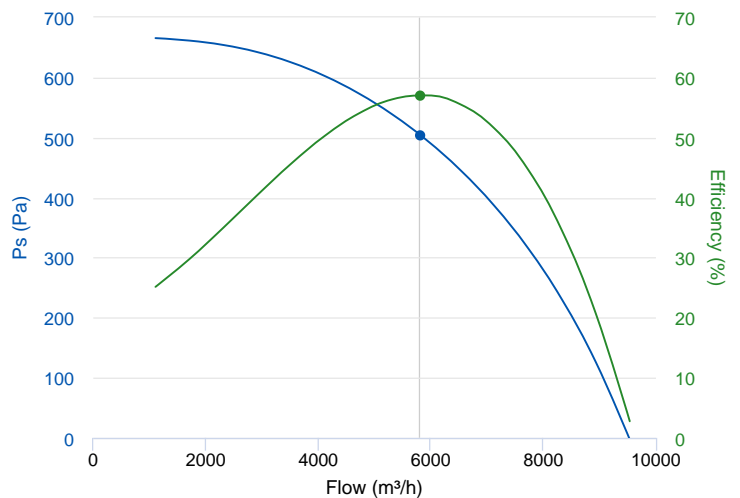
Motor

Power	1,5 kW	RPM	1450	I max. (230V)	5,67 A	I max. (400V)	3,26 A
Size	90L	Approx. weight	22 kg	Efficiency (%)	85.3 %	FP	0.8

ERP DATA

Fan data sheet

Fan type	Unit for non-residential ventilation (LOT 6)	
Typology	Unidirectional	
reports.other	None	
Type of driver	None	
Motor power (kW)	1.5	
	Fan values	ERP Requirements 2018
Max. efficiency (%)	57.05	44.54
Effic. Heat recovery (%)	-	
Pabs (kW)	1.506	
Flow (m³/h)	5818.97	
Static pressure (Pa)	503.85	
Speed (m/s)	6.46	

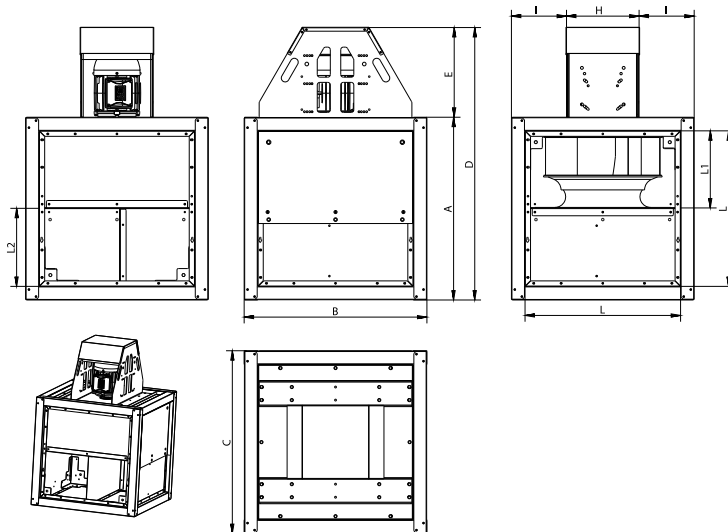




Fan values	ERP Requirements 2018
------------	-----------------------

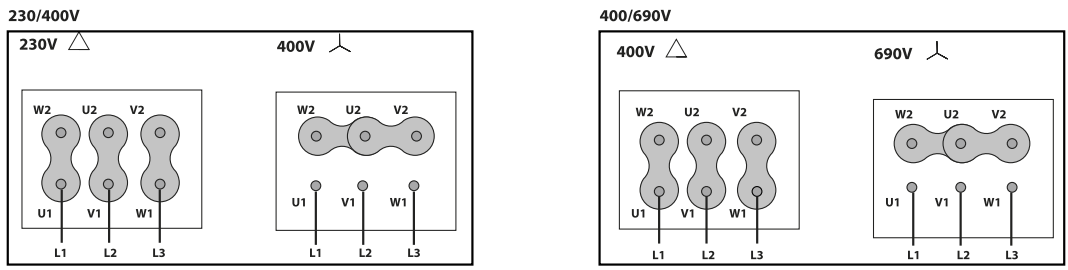
SFP (W/m3/s)	931.86
--------------	--------

DIMENSIONS



Dimensions (mm)									
A	900	B	900	C	900	D	1243,5	E	343,5
H	338	I	281	K	26	L	795,7	L1	314,3
L2	479,9								

WIRING DIAGRAM



ACCESSORIES



**SAFETY SWITCH
INT 25 3P A**
REF: INT253PA



**SAFETY SWITCH FOR 400°C/2h
INT 400 25A 3P**
REF: 508902501



**OUTLET FLANGE FOR DHUMAT
EI DHUMAT 500**
REF: 965500111



**DHUMAT FEET KIT
DKF 500-560**
REF: 245569201



**OUTDOOR FLANGE WITH BIRD GUARD FOR
DHUMAT
VIS DHUMAT 500-560**
REF: 965500001



**FREQUENCY SPEED CONTROLLER
SFC 230 I 7A ***
REF: SFC230I007



**FREQUENCY SPEED CONTROLLER
SFC 400 III 3,6A ***
REF: SFC400III4

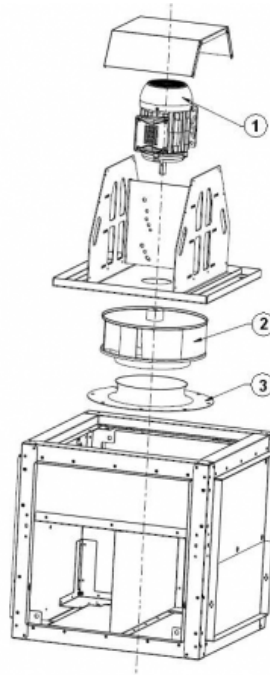


**ANTI-VIBRATION RUBBER BLOCK
AVR (GENERIC)**



**ANTI-VIBRATION SPRING BLOCK
AVS (GENERIC)**

SPARE PARTS



	Code	Model	Qty
1	721001155	MOTOR 1,5kW T4 B3 230/400V	x1

	Code	Model	Qty
2	279509381	TURBINE THRE R63B1 500X160x24 RD	x1
3	279501680	INLET CONE ED11 500	x1